

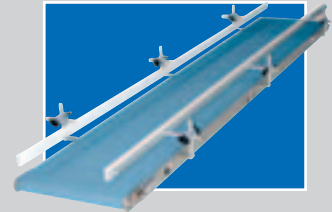
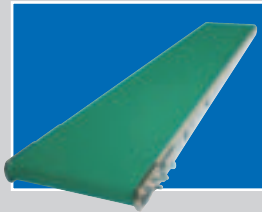
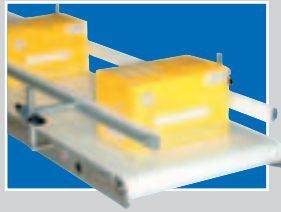
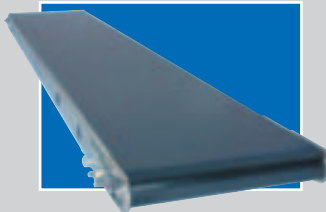


Specifications



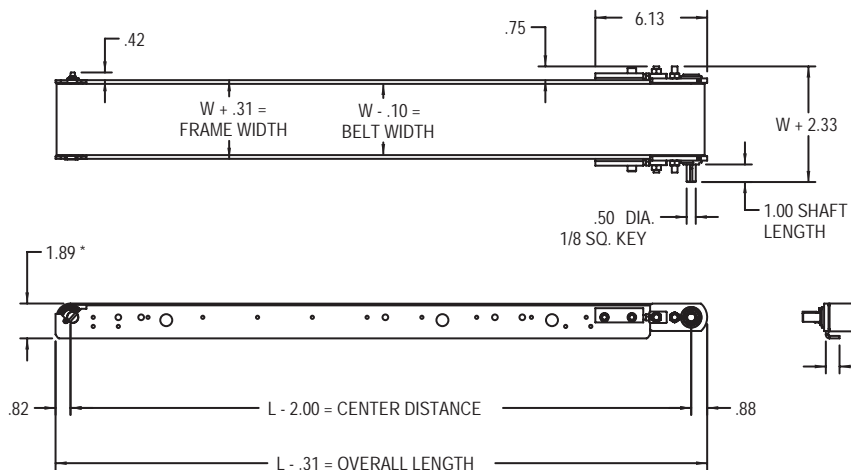
- Width 2" to 24"
- Length 24" to 144"
- Profile 1.89" high
- Drive Pulley 1.31" Diameter
- Load Carrying Capacity to 450 lbs.*
- Speed Range up to 225 fpm*
- Conveyor made from corrosion resistant components for wipe-down applications

*See Technical Data on page 46



Overview Dimensions

Note: As in all industries, technical specifications will change with technology updates. Please consult factory or see www.qcindustries.com for the most up-to-date drawings.

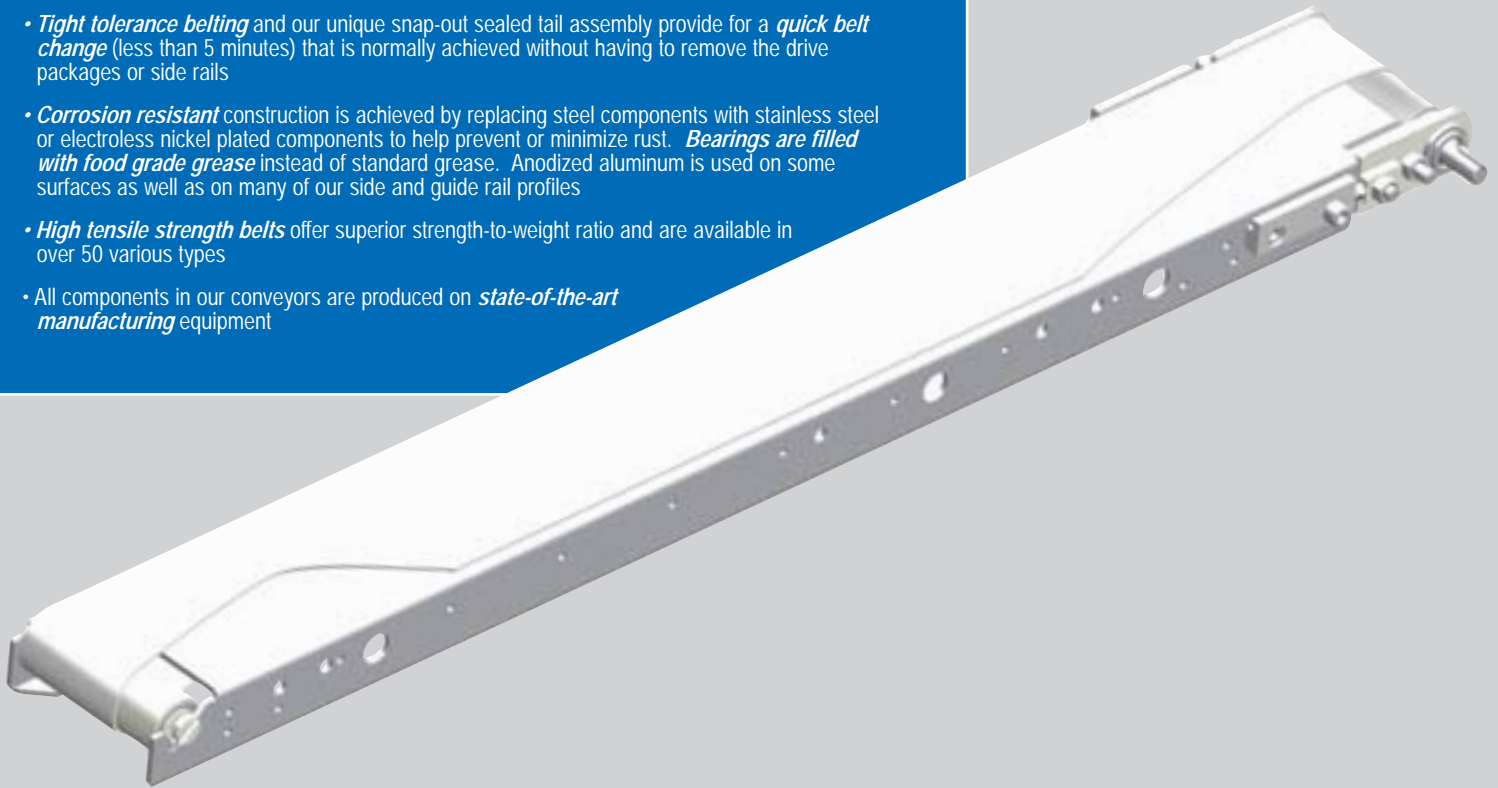


*Dimension reflects use of MAA belt. See pages 52-53.

Features & Benefits

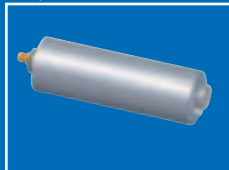
Conveyor

- **Low profile design** provides tight product transfers and the ability to fit into space-constrained areas
- Single piece 10-gauge stainless steel framework is laser cut and formed to create a **single-body frame construction**, ensuring frame integrity
- **Tight tolerance belting** and our unique snap-out sealed tail assembly provide for a **quick belt change** (less than 5 minutes) that is normally achieved without having to remove the drive packages or side rails
- **Corrosion resistant** construction is achieved by replacing steel components with stainless steel or electroless nickel plated components to help prevent or minimize rust. **Bearings are filled with food grade grease** instead of standard grease. Anodized aluminum is used on some surfaces as well as on many of our side and guide rail profiles
- **High tensile strength belts** offer superior strength-to-weight ratio and are available in over 50 various types
- All components in our conveyors are produced on **state-of-the-art manufacturing** equipment



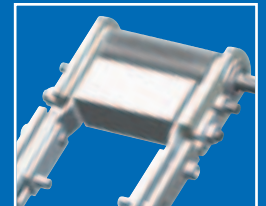
Tail Pulley Assembly

- **Single point belt tension** is achieved through a **snap-in eccentric tail assembly** designed to pull through the natural elongation characteristics of the belt and provide quick and easy belt change capacity
- **Crowned sealed tail assembly** is designed to promote excellent belt tracking and is equipped with superior **needle bearings with seals** that are filled with food grade grease
- **Thrust washers** designed into the tail assembly provide axial float, which allows the assembly to move with the natural camber of the belt and **protect bearings against off-center load conditions**
- Grease fitting design in the tail assembly allows for lubrication of bearings while the conveyor is running, resulting in **zero down time during lubrication**
- **Precision bearing alignment** is guaranteed within the pressed tail assembly, providing optimal conditions to **move the heaviest loads** in low profile conveyors
- Eccentric tracking bushing allows for **single point tracking control** at the idler end of the conveyor



Drive Assembly

- **Straight knurl design** used to **prevent premature wear** on the carcass of the belt and still provide superior grip to overcome start-up inertia
- **Crowned sealed drive assembly** designed to promote superior belt tracking, and is equipped with **superior needle bearings with seals** that are filled with food grade grease
- **Thrust washers** designed into the drive assembly provide axial float, which allows the assembly to move with the natural camber of the belt and **protect bearings against off-center load conditions**
- Discreet needle fitting lubrication points in each bearing housing allows for lubrication of bearings while the conveyor is running, resulting in **zero down time during lubrication**
- **Precision bearing alignment** is guaranteed within the pressed bearing assemblies that are piloted on body fitted studs, providing optimal conditions to **move the heaviest loads** in low profile conveyors
- **Threaded tracking adjustment points** provide simple responsive belt tracking that retain settings, even during belt removal
- Drive pulley available in **solid output design** or **dual output design**



Technical Data

Each of the myriad of applications that exist requires certain performance characteristics from the conveyor. QC Industries has developed a sizing system that condenses all of these parameters into a common factor, namely equivalent load.

A conveyor application that is accumulating a 5-pound load, for example, demands the conveyor to carry more than 5 pounds. As such, we have developed certain factors to add to the load that the conveyor needs to carry.

Follow the five steps below to determine the equivalent load your application requires. The result will then be used to help choose the gear motor arrangement that will provide the correct torque.

1. Nominal Load

1. _____

Enter the total load in pounds the conveyor must carry. For example, (12) cartons weighing 10 pounds each would have a total nominal load of 120 lbs. Use Figure 46-A to cross-reference the width conveyor you desire with the nominal load you need to carry, to ensure it can carry the load. Each conveyor width listed shows a total load carrying capacity for both drive pushing and drive pulling applications. Enter nominal load (in pounds) on Line One.

2. Accumulation

2. _____

If the application does not have an accumulating load, enter zero on Line Two. Otherwise, multiply the nominal load times an accumulation factor. (0.2 for accumulation belts listed on page 52 and 0.3 for MAA standard urethane). Enter result on Line Two.

3. Incline/Decline [Factor] x [Load] =

3. _____

Some applications require an incline or decline. If the application does not require an incline or decline enter zero on Line Three. For inclining or declining applications choose a factor from Figure 46-B based upon the angle of incline then multiply that factor by the total nominal load from Line One. Enter result on Line Three.

4. Side Seals

4. _____

If the application does not call for side rails with seals to prevent small parts from getting under the rail, enter zero on Line Four. Otherwise multiply the conveyor length in feet by 5. The side rails can be found on page 54. Example: 96" long conveyor with side seals would have a factor of 40 (8 x 5). Enter result on Line Four.

**Verify Load Capacity:

After adding lines one through four together, please reference Figure 46-A to ensure that the conveyor width you desire will carry the sum of Lines One through Four. If the sum is greater than the load capacity listed for the width you have chosen, please choose a wider conveyor or consult the factory.



5. Conveyor Friction

5. _____

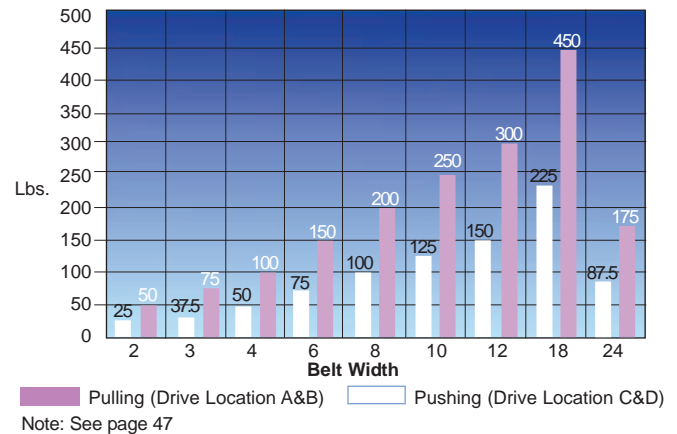
All conveyors have a certain amount of friction that must be added to the nominal load. To determine how much additional load must be factored in, add 4 to the conveyor width in inches, then multiply by 6, or simply choose the value from Figure 46-C. Enter result on Line Five.

Equivalent Load (lbs) SUM (1-5) _____ lbs.

Write down the equivalent load on your application assistance form (see pages 116-117). The equivalent load will be needed to properly size a gear motor (see pages 60-65).

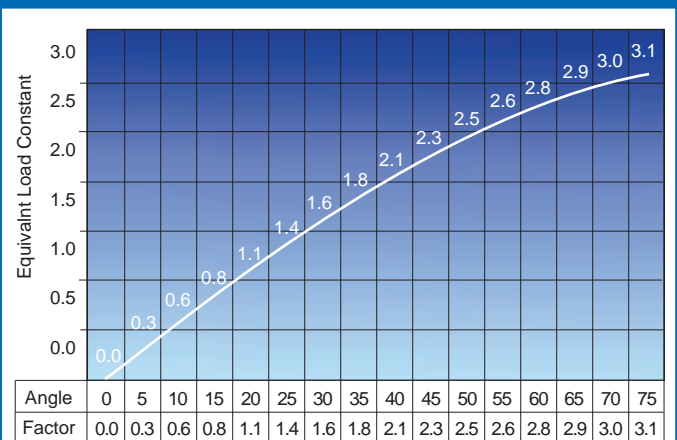
Next, proceed to the next page to construct the conveyor part number.

Load Carrying Capacity - Figure 46-A

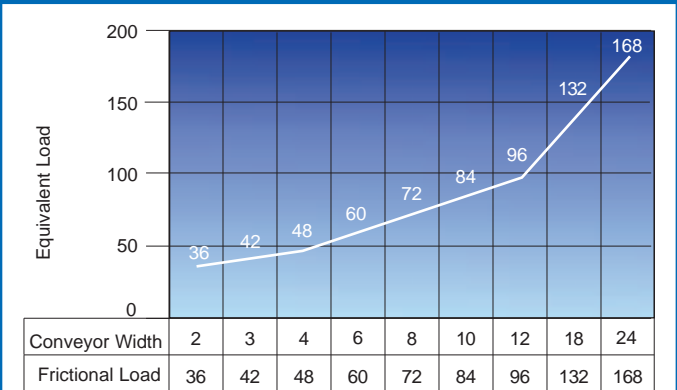


Above load carrying capacities are for both drive pushing and pulling applications. Note: for drive pushing applications, decrease load capacity of conveyor by 1/2.

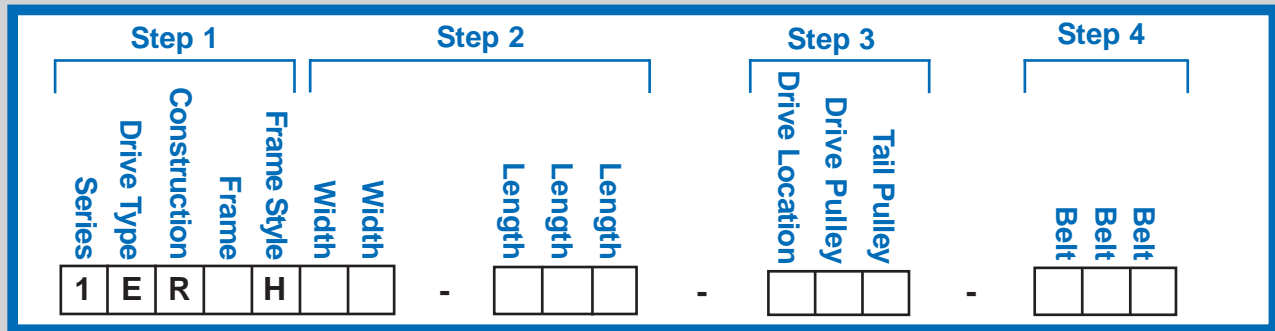
Incline/Decline Load Factors - Figure 46-B



Conveyor Friction - Figure 46-C



How to Order



Step 1

Series	Drive Type	Construction	Frame	Frame Style
1 = 125	E = End Drive	R = Corrosion Resistant	E = 1.81" Stainless Steel B = 1.81" Powder Coat (Beige) <small>Custom colors available - Contact factory</small>	H = Straight Frame

Step 2

Widths								Lengths*								
2"	3"	4"	6"	8"	10"	12"	18"	24"	24"	36"	48"	60"	72"	96"	120"	144"
02	03	04	06	08	10	12	18	24	024	036	048	060	072	096	120	144

*Contact factory for special lengths

Step 3

Drive Location		Drive Pulley Type		Tail Pulley Type	
C	D	Standard	Cap <input type="text"/> 1/2" Dia* Solid Output Shaft	S	Standard
A	B	Option see pg. 41	1/2" Dia* <input type="text"/> 1/2" Dia* Dual Output	D	Q

A&B are drive pulling
C&D are drive pushing

* 1/8" sq. key included

Step 4

Choose three-digit belt ordering code on pages 52-53.

Example: 1EREH03-048-ASQ-MAA

125 Series conveyor with corrosion resistant construction and 1.81" stainless steel frame. Conveyor measures 3" wide by 48" long with solid output pulley and standard tail pulley. The drive output shaft is in the A position. The conveyor has a standard urethane belt.

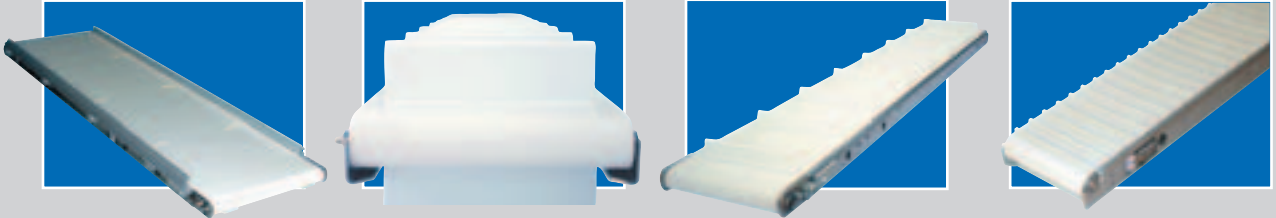
As standard, we assemble the conveyor, track the pre-tensioned belt and quality check every conveyor before we ship to the customer. Accessories such as Drives, Stands, Mounts, and Guides are packaged separately and are shipped unassembled with the conveyor to prevent damage during shipment. Complete assembly can be provided upon request; please contact our factory for details.

Note: proceed to page 54 to continue sizing your conveyor...

Specifications

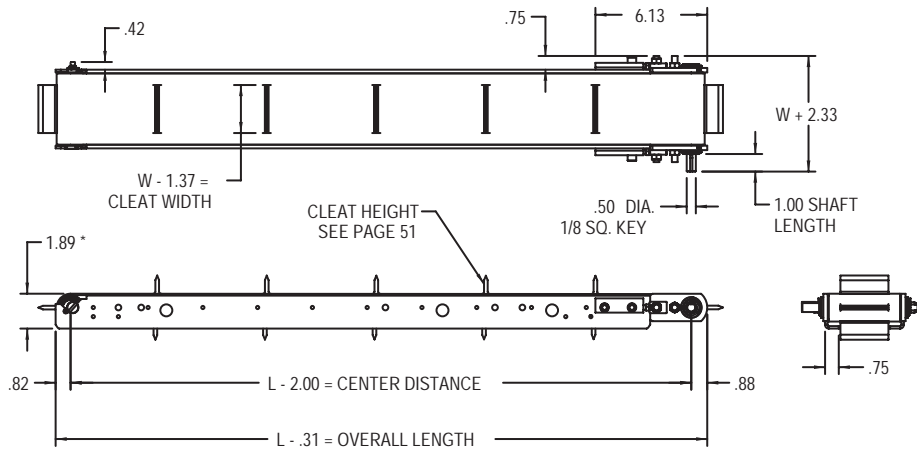
- Width 2" to 24"
- Length 24" to 144"
- Profile 1.89" high
- Drive Pulley 1.31" Diameter
- Load Carrying Capacity to 450 lbs.*
- Speed Range up to 225 fpm*
- Multiple Cleat Heights Available
- Conveyor made from corrosion resistant components for wipe-down applications

*See Technical Data on page 50



Overview Dimensions

Note: As in all industries, technical specifications will change with technology updates. Please contact factory or see www.qcindustries.com for the most up-to-date drawings.

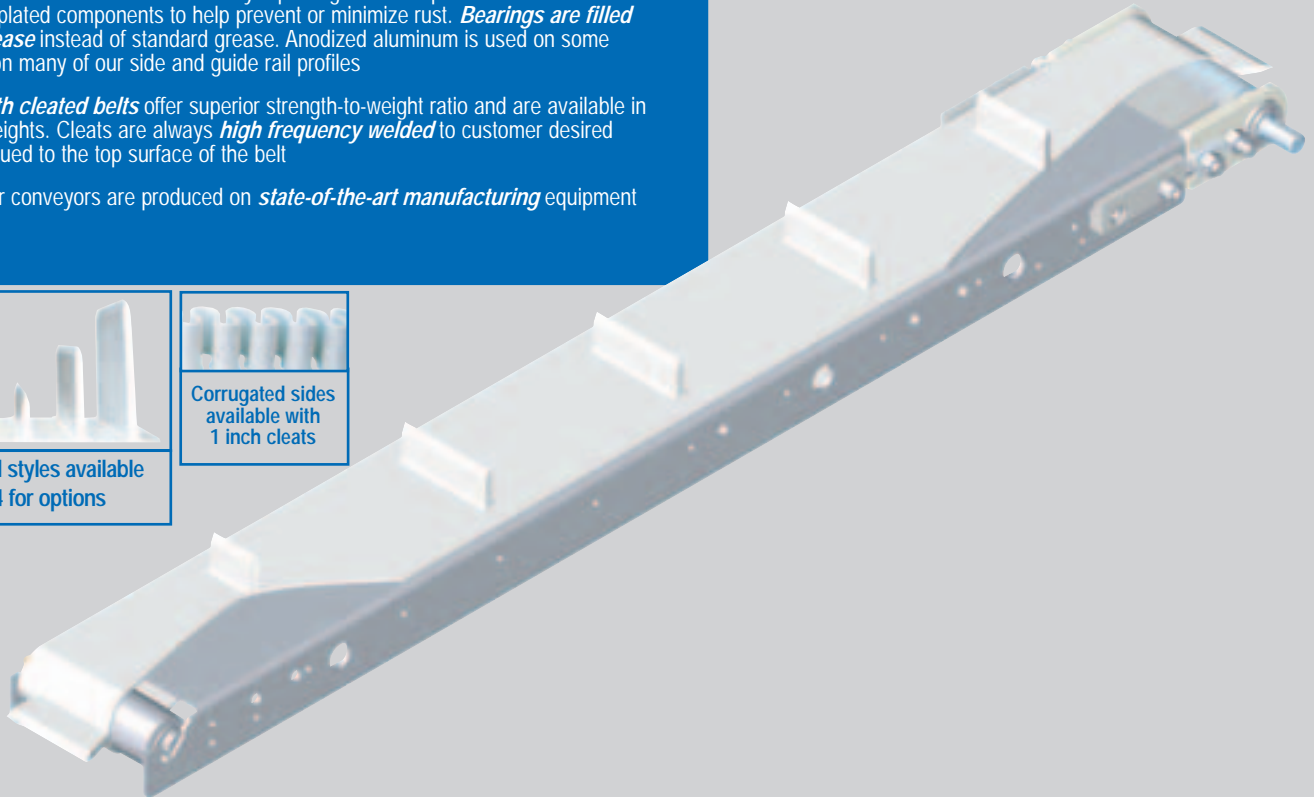


*Dimension reflects use of MAA belt. See pages 52-53.

Features & Benefits

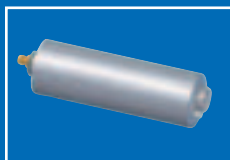
Conveyor

- **Low profile design** provides tight product transfers and the ability to fit into space-constrained areas
- Single piece 10-gauge stainless steel framework is laser cut and formed to create a **single-body frame construction**, ensuring frame integrity
- **Tight tolerance belting** and our unique snap-out sealed tail assembly provide for a **quick belt change** (less than 5 minutes) that is normally achieved without having to remove the drive packages or side rails
- **Corrosion resistant construction** is achieved by replacing steel components with stainless steel or electroless nickel-plated components to help prevent or minimize rust. **Bearings are filled with food grade grease** instead of standard grease. Anodized aluminum is used on some surfaces as well as on many of our side and guide rail profiles
- **High tensile strength cleated belts** offer superior strength-to-weight ratio and are available in various styles and heights. Cleats are always **high frequency welded** to customer desired spacing and never glued to the top surface of the belt
- All components in our conveyors are produced on **state-of-the-art manufacturing** equipment



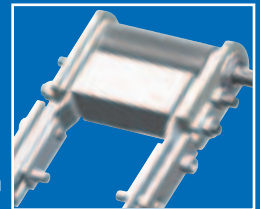
Tail Assembly

- **Single point belt tension** is achieved through a **snap-in eccentric tail assembly** designed to pull through the natural elongation characteristics of the belt and provide quick and easy belt change capacity
- **Crowned sealed tail assembly** is designed to promote excellent belt tracking and is equipped with superior **needle bearings with seals** that are filled with food grade grease
- **Thrust washers** designed into the tail assembly provide axial float, which allows the assembly to move with the natural camber of the belt and **protect bearings against off-center load conditions**
- Grease fitting design in the tail assembly allows for lubrication of bearings while the conveyor is running, resulting in **zero down time during lubrication**
- **Precision bearing alignment** is guaranteed within the pressed tail assembly, providing optimal conditions to **move the heaviest loads** in low profile conveyors
- Eccentric tracking bushing allows for **single point tracking control** at the idler end of the conveyor



Drive Assembly

- **Straight knurl design** used to **prevent premature wear** on the carcass of the belt and still provide superior grip to overcome start-up inertia
- **Crowned sealed drive assembly** designed to promote superior belt tracking, and is equipped with **superior needle bearings with seals** that are filled with food grade grease
- **Thrust washers** designed into the drive assembly provide axial float, which allows the assembly to move with the natural camber of the belt and **protect bearings against off-center load conditions**
- Discreet needle fitting lubrication points in each bearing housing allows for lubrication of bearings while the conveyor is running, resulting in **zero down time during lubrication**
- **Precision bearing alignment** is guaranteed within the pressed bearing assemblies that are piloted on body fitted studs, providing optimal conditions to **move the heaviest loads** in low profile conveyors
- **Threaded tracking adjustment points** provide simple responsive belt tracking that retain settings, even during belt removal
- Drive pulley available in **solid output design** or **dual output design**



Technical Data

Each of the myriad of applications that exist requires certain performance characteristics from the conveyor. QC Industries has developed a sizing system that condenses all of these parameters into a common factor, namely equivalent load.

A conveyor application that is carrying a 5-pound load, for example, demands the conveyor to carry more than 5 pounds. As such, we have developed certain factors to add to the load that the conveyor needs to carry.

Follow the three steps below to determine the equivalent load your application requires. The result will then be used to help choose the gear motor arrangement that will provide the correct torque

1. Nominal Load

1. _____

Enter the total load in pounds the conveyor must carry. For example, (12) cartons weighing 10 pounds each would have a total nominal load of 120 lbs. Use Figure 50-A to cross-reference the width conveyor you desire with the nominal load you need to carry, to ensure it can carry the load. Each conveyor width listed shows a total load carrying capacity for both drive pushing and drive pulling applications.

Enter nominal load (in pounds) on Line One.

2. Incline/Decline [Factor] x [Load] =

2. _____

Some applications require an incline or decline. If the application does not require an incline or decline enter zero on Line Two. For inclining or declining applications choose a factor from Figure 50-B based upon the angle of incline then multiply that factor by the total nominal load from Line One.

Enter result on Line Two.

**Verify Load Capacity:

After adding lines One and Two together, please reference Figure 50-A to ensure that the conveyor width you desire will carry the sum of Lines One through Two. If the sum is greater than the load capacity listed for the width you have chosen, please choose a wider conveyor.



3. Conveyor Friction

3. _____

All conveyors have a certain amount of friction that must be added to the nominal load. To determine how much additional load must be factored in, add 4 to the conveyor width in inches, then multiply by 6, or simply choose the value from Figure 50-C.

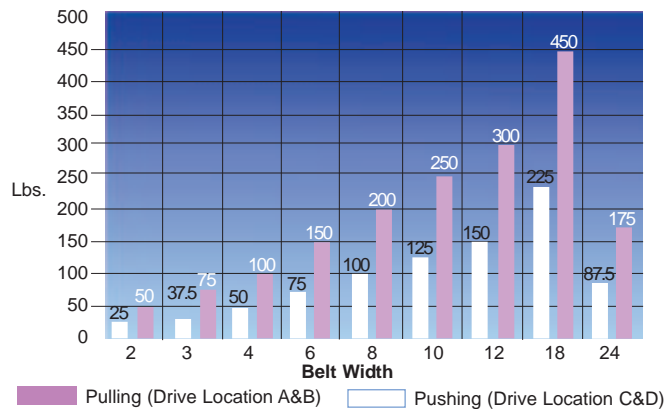
Enter result on Line Three.

Equivalent Load (lbs) SUM (1-3) _____ lbs.

Write down the equivalent load on your application assistance form (see pages 116-117). The equivalent load will be needed to properly size a gear motor (see pages 60-65).

Next, proceed to the next page to construct the conveyor part number.

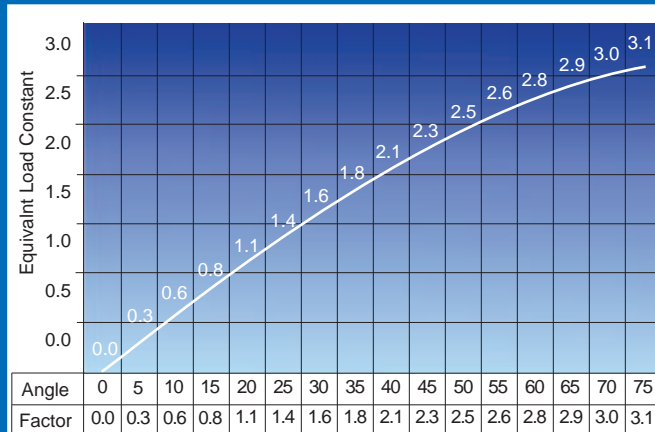
Load Carrying Capacity - Figure 50-A



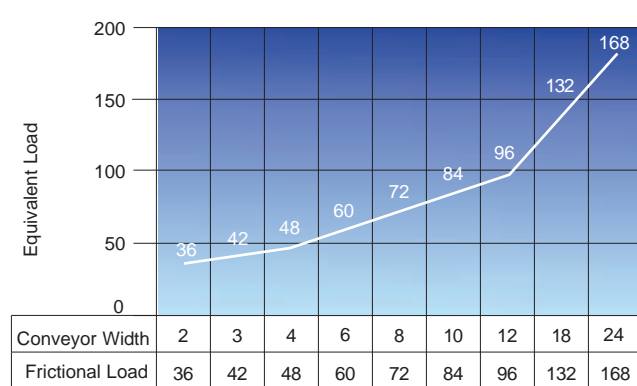
Note: See page 51

Above load carrying capacities are for both drive pushing and pulling applications. Note: for drive pushing applications, decrease load capacity of conveyor by 1/2.

Incline/Decline Load Factors - Figure 50-B



Conveyor Friction - Figure 50-C



How to Order

Step 1				Step 2			Step 3			Step 4			Step 5				
Series	Drive Type	Construction	Frame Style	Width	Width	Length	Length	Length	Drive Location	Drive Pulley	Tail Pulley	Belt	Belt	Belt	# of Cleats	# of Cleats	# of Cleats
1	E	R	H														

Step 1

Series	Drive Type	Construction	Frame	Frame Style
1 = 125	E = End Drive	R = Corrosion Resistant	E = 1.81" Stainless Steel B = 1.81" Powder Coat (Beige) Custom colors available - Contact factory	H = Straight Frame

Step 2

Widths									Lengths*							
2"	3"	4"	6"	8"	10"	12"	18"	24"	24"	36"	48"	60"	72"	96"	120"	144"
02	03	04	06	08	10	12	18	24	024	036	048	060	072	096	120	144

*Contact factory for special lengths

Step 3

Drive Location	Drive Pulley Type	Tail Pulley Type									
<p>A&B are drive pulling C&D are drive pushing</p>	<table border="1"> <tr> <td>Standard</td> <td>Cap 1/2" Dia* Solid Output Shaft</td> <td>S</td> </tr> <tr> <td>Option see pg 41</td> <td>1/2" Dia* 1/2" Dia*</td> <td>D</td> </tr> </table>	Standard	Cap 1/2" Dia* Solid Output Shaft	S	Option see pg 41	1/2" Dia* 1/2" Dia*	D	<table border="1"> <tr> <td>Standard</td> <td> Standard</td> <td>Q</td> </tr> </table>	Standard	Standard	Q
Standard	Cap 1/2" Dia* Solid Output Shaft	S									
Option see pg 41	1/2" Dia* 1/2" Dia*	D									
Standard	Standard	Q									

* 1/8" sq. key included

Step 4

Choose a base belt material and cleat height

Cleat Height	5mm	19mm	1/2"	3/4"	1" w/corr. sides	1"	2"	3"
MAA (Standard Urethane)	CAB	CAD	CAE	CAF	CAH	CAG	CAI	CAK
UAC (White Urethane)	CBB	CBD	CBE	CBF	CBH	CBG	CBI	CBK

Note 1: All belts must have a cleat indent of width minus 1.37", except 1" cleats with corrugated sidewall. That cleat indent is width minus 3.62"
Note 2: Cleated belts are intended for use in conjunction with indented or adjustable guides (see page 23)

Step 5

Determine the total number of cleats on the conveyor. Multiply conveyor length (in inches) by 2, divide by the desired spacing between the cleats (in inches). This will result in the total number of cleats evenly spaced around the circumference of the belt. Note: Must have a whole number of cleats.

Example: 1EREH08-048-ASQ-CAE016

125 Series conveyor with corrosion resistant construction and 1.81" stainless steel frame. Conveyor measures 8" wide by 48" long with solid output pulley and standard tail pulley. The drive output shaft is in the A position. The conveyor belt has a 1/2" high cleat every 6".

As standard, we assemble the conveyor, track the pre-tensioned belt and quality check every conveyor before we ship to the customer. Accessories such as Drives, Stands, Mounts, and Guides are packaged separately and are shipped unassembled with the conveyor to prevent damage during shipment. Complete assembly can be provided upon request; please contact our factory for details.

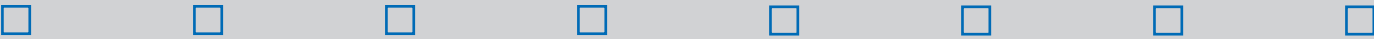
Note: proceed to page 54 to continue sizing your conveyor...

Belt Selection Guide

	Belt Ordering Code	Top Surface Description	Top Surface Material	Belt Color	FDA	Topside Coefficient of Friction (CoF)	Short Term Part Max. Temperature (°F)	Max. Ambient Operating Temperature (°F)	Anti-Static	Average Belt Thickness (Inches)
Multi-Purpose Belts										
A. Standard Urethane	MAA	Smooth	Urethane	White	YES	LOW	212	176	YES	0.075
B. Option #1-Sealed Edge Standard Urethane	MAB	Smooth, Sealed Edge	Urethane	White	YES	LOW	212	176	YES	0.075
C. Option #2-Spill Edge Cleat	MAC	Longitudinal Serrated Cleat	Urethane	White	YES	LOW	212	176	YES	0.075
D. Option #3-Perforated Belt	MAD	Smooth, Perforations	Urethane	White	YES	LOW	212	176	YES	0.075
High Friction Belts										
A. Grey Diamond Top High Adhesion	FAA	Snakeskin	PVC	Light Grey	NO	HIGH	212	176	NO	0.103
B. Green High Tack PVC	FAB	Matte	PVC Soft	Dark Green	NO	HIGH	212	176	YES	0.145
C. Beige FDA High Adhesion	FAC	Smooth	Silicone	Beige	YES	HIGH	212	176	YES	0.072
D. Black Lateral Grooved High Adhesion	FAD	Longitudinal Groove	PVC	Black	NO	HIGH	194	158	YES	0.083
E. Black Rough Top High Adhesion	FAF	Rough Top	PVC	Black	NO	HIGH	212	176	YES	0.185
Accumulation Belts (Low Friction)										
A. White FDA Fabric Accumulator	AAA	Fabric	Urethane	White	YES	VERY LOW	212	176	YES	0.054
C. Black Tight Weave Accumulator	AAC	Fabric	Urethane Impregnated	Black	NO	VERY LOW	248	212	NO	0.051
D. Grey Textured Urethane Accumulator	AAD	Textured	Urethane Impregnated	Light Grey	NO	VERY LOW	140	140	YES	0.060
E. Green FDA Fabric Accumulator	AAE	Fabric	Urethane Impregnated	Dark Green	YES	VERY LOW	175	175	YES	0.054
Heat-Resistant Belts										
A. White Silicone Heat Resistor	HAA	Fine Texture	Silicone	White	NO	MED	356	356	YES	0.059
B. White Silicone Translucent Resistor	HAB	Fabric	Silicone Impregnated	White	NO	LOW	356	356	YES	0.051
C. Smooth White FDA Silicone Heat Resistor	HAC	Smooth	Silicone	White	YES	MED	400	350	NO	0.085
D. Blue Nitrile Heat Resistor	HAD	Coarse Structure	Nitrile Rubber	Blue	NO	MED	300	212	YES	0.079
E. White Nitrile Heat Resistor	HAE	Smooth	Nitrile Rubber	White	NO	MED	300	212	YES	0.067
Cut Resistant Belts										
A. Yellow Cut Resistor	IAA	Smooth	Urethane	Yellow	NO	LOW	230	194	YES	0.060
B. Standard Urethane	IAB	Smooth	Urethane	White	YES	LOW	212	176	YES	0.075
C. Black Dimple Top Cut Resistor	IAC	Dimple Top	Hard Urethane	Black	NO	HIGH	248	212	YES	0.083
D. Rugged Poly Cut Resistor	IAD	Structured	Nitrile Rubber	Black	NO	MED	176	176	YES	0.100
FDA Belts										
A. Standard Urethane	UAA	Smooth	Urethane	White	YES	LOW	212	176	YES	0.075
B. Sealed Edge Standard Urethane	UAB	Smooth, Sealed Edge	Urethane	White	YES	LOW	212	176	YES	0.075
C. Pure White FDA	UAC	Matte	Urethane	White	YES	LOW	230	194	YES	0.055
D. Woven White FDA	UAD	Smooth	Urethane Impregnated	Translucent	YES	MED	248	212	YES	0.047
E. White FDA Urethane High Adhesion	UAE	Smooth	Urethane	White	YES	HIGH	176	176	YES	0.050
Static Conductive Belts										
A. Textured Carbon Impregnated	EAA	Textured	Urethane Impregnated	Black	NO	MED	212	176	10 ⁴ Ω	0.063
B. Accumulation Static Conductive	EAB	Rough Texture	Nitrile Rubber	Black	NO	HIGH	212	212	10 ⁴ Ω	0.080
C. Low Friction Static Conductive	EAC	Smooth	Urethane	Black	NO	LOW	158	158	10 ⁶ Ω	0.040
D. Structured Static Conductive	EAD	Structured	NBR Impregnated Fleece	Black	NO	MED	176	176	10 ⁶ Ω	0.100
Translucent Belts										
A. Green Translucent Accumulator	TAA	Textured	Impregnated PU	Light Green	YES	VERY LOW	175	175	NO	0.023
B. FDA Fabric Translucent Accumulator	TAB	Fabric	Urethane Impregnated	Translucent	YES	VERY LOW	248	212	NO	0.024
C. Silicone Translucent Accumulator	TAC	Textured	Silicone	Translucent	YES	VERY LOW	176	176	NO	0.040
Color Contrasting Belts										
A. Gray Textured Contraster	PAA	Textured	PVC	Grey	NO	MED	158	158	YES	0.060
B. Smooth Green Urethane Contraster	PAB	Smooth	Urethane	Green	YES	LOW	176	176	YES	0.050
C. Dark Green PVC Contraster	PAC	Matte	PVC	Dark Green	NO	MED	212	176	YES	0.075
D. Light Blue Urethane Contraster	PAD	Matte	Urethane	Light Blue	YES	MED	212	176	YES	0.063
E. Smooth Black PVC Contraster	PAE	Smooth	PVC	Black	NO	MED	212	176	NO	0.071
Non-Marking Belts										
A. Felt Topped Product Protector	NAA	Felt	Felt	White	YES	MED	175	175	NO	0.070
B. Fabric Topped Product Protector	NAB	Fabric	Spun Polyester	White	YES	MED	175	175	NO	0.067
C. Cotton Topped Product Protector	NAC	Fabric	Cotton	Natural White	YES	MED	175	175	NO	0.072
D. Black Elastomer Product Protector	NAD	Felt	Polyester	Black	NO	MED	302	248	YES	0.098
Release Properties Belts										
A. Beige Silicone Product Release	RAA	Smooth	Silicone	Beige	YES	HIGH	212	176	YES	0.072
B. White PVC Product Release	RAB	Matte, Smooth	Non-Stick PVC	White	YES	LOW	194	158	YES	0.059
C. Textured Silicone Product Release	RAC	Fine Texture	Silicone	White	NO	MED	356	356	YES	0.059
D. Smooth Habilenne Product Release	RAD	Smooth	Habilene	White	YES	MED	176	176	YES	0.090
E. Smooth Silicone Product Release	RAE	Textured	Silicone	White	YES	LOW	176	176	NO	0.040
Specialty/Profile Belts										
A. Green Sawtooth Profile Belt	SAA	Sawtooth	PVC	Green	NO	HIGH	212	176	YES	0.177
B. White Grooved Rubber	SAB	Lateral Groove	Nitrile Rubber	White	YES	HIGH	225	225	NO	0.210
C. Stipple Top PVC Profile	SAC	Stipple Top	PVC	White	YES	MED	212	176	NO	0.106
D. Negative Pyramid Profile	SAD	Textured	Urethane	White	YES	MED	212	176	YES	0.078
E. Green Longitudinal PVC Profile Belt	SAE	Longitudinal Groove	PVC	Green	NO	HIGH	175	175	YES	0.175

Chemical Resistant Belts

Due to the broad spectrum of chemicals and percentages of chemical mixtures, QC Industries offers belt selection assistance in chemical application circumstances. Our application specialists will help determine which belt is best suited to withstand the chemicals present as well as the entire scope of the application parameters. This approach delivers the best possible product for the application.



QC Industries offers conveyor belting for a wide variety of applications and industries. These pages cover a number of the more popular belts we have provided through the years. These belts have all been tested at QC Industries and offer a compatible fit to the 125 Series conveyors. If you have a specific need that is not covered on these pages, please

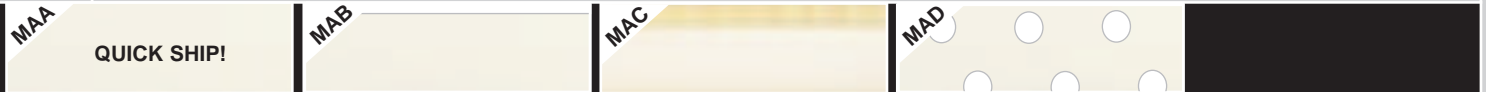
contact one of our sales engineers directly at the factory to discuss your application parameters.

To Order With Conveyor:
Please use the three-digit QC belt code number for conveyor ordering on pages 47 and 51.

To Order Belt Only:
Choose nominal conveyor width and length in inches and enter the three-digit belt code.

1E - WW - LLL - □□□
Example: 1E-08-120-MAA
Standard urethane belt for an 8" wide by 120" long 125 Series conveyor

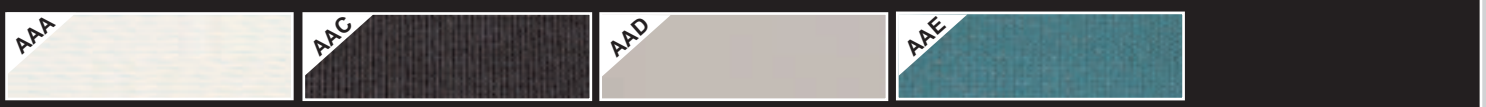
Multi-Purpose Belts



High-Friction Belts



Accumulation Belts (Low Friction)



Heat-Resistant Belts



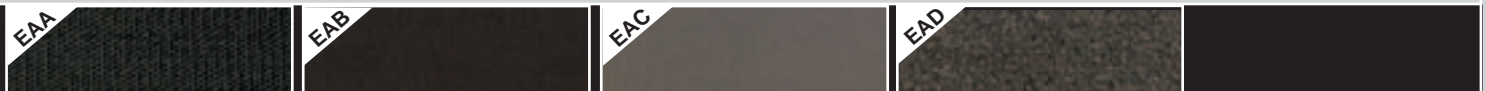
Cut-Resistant Belts



FDA/USDA Belts



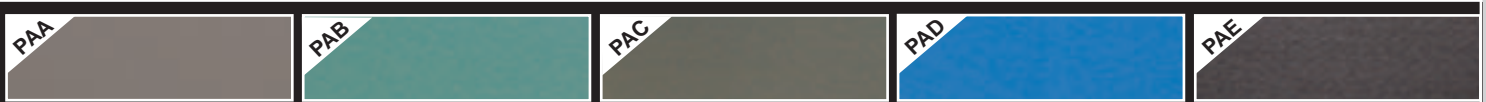
Static Conductive Belts



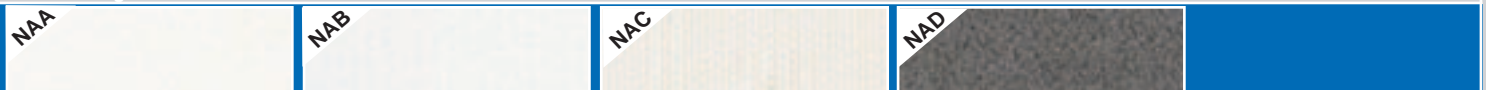
Translucent Belts



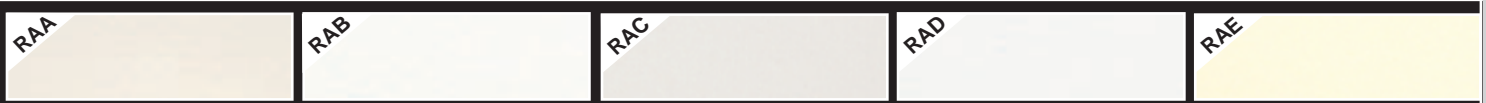
Color Contrasting Belts



Non-Marking Belts



Release Properties Belts



Specialty/Profile Belts

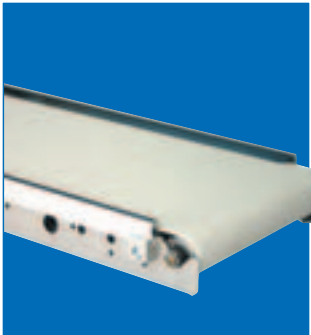


Chemical Resistant Belts

Due to the wide variety of chemical and percentages of chemical mixtures, QC Industries offers belt selection assistance in these application circumstances. Our application specialists will help determine which belt is best suited to withstand not only the chemicals present, but the entire scope of the application parameters. This approach delivers the best possible product for the application.

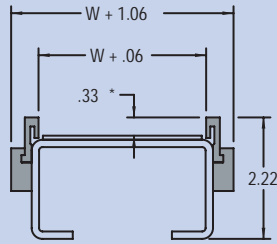


Fixed Side Rails



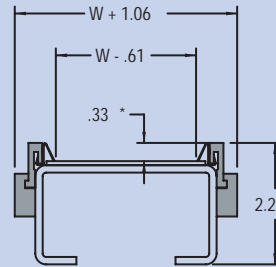
1/3" Side Rails

125R-0169 pictured



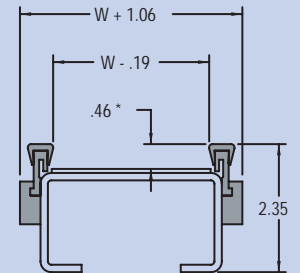
Aluminum extruded 1/3" high sides
Part No. 125R-0153-□□□

To Order:
Fill in the last three digits of the part number with the nominal conveyor length in inches.
Ex. 125R-0153-048



Aluminum extruded 1/3" high sides with seals**
Part No. 125R-0169-□□□

To Order:
Fill in the last three digits of the part number with the nominal conveyor length in inches.
Ex. 125R-0169-096



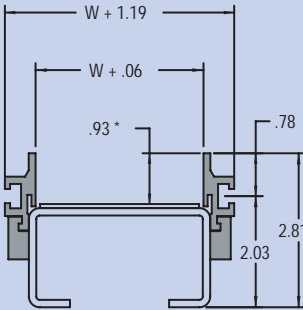
Aluminum extruded 1/3" high sides with wear strip
Part No. 125R-0170-□□□

To Order:
Fill in the last three digits of the part number with the nominal conveyor length in inches.
Ex. 125R-0170-024



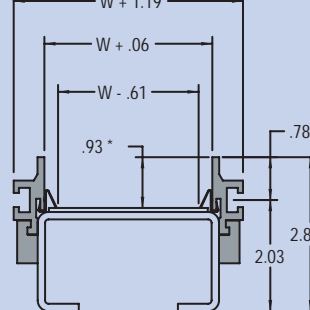
1" Side Rails

125R-0178 pictured



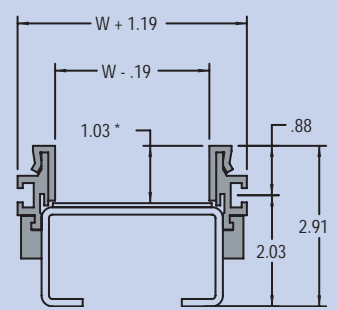
Aluminum extruded 1" high sides
Part No. 125R-0174-□□□

To Order:
Fill in the last three digits of the part number with the nominal conveyor length in inches.
Ex. 125R-0174-048



Aluminum extruded 1" high sides with seals**
Part No. 125R-0177-□□□

To Order:
Fill in the last three digits of the part number with the nominal conveyor length in inches.
Ex. 125R-0177-024



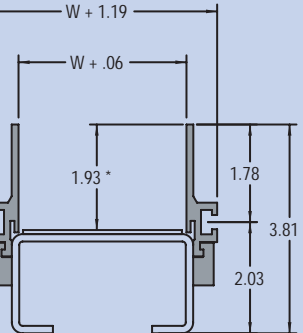
Aluminum extruded 1" high sides with wear strip
Part No. 125R-0178-□□□

To Order:
Fill in the last three digits of the part number with the nominal conveyor length in inches.
Ex. 125R-0178-096



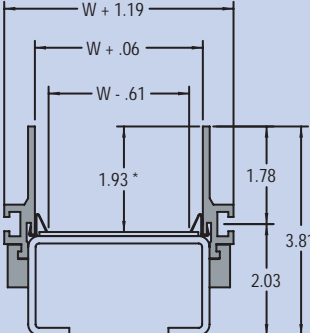
2" Side Rails

125R-0215 pictured



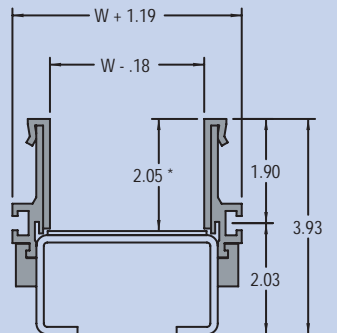
Aluminum extruded 2" high sides
Part No. 125R-0215-□□□

To Order:
Fill in the last three digits of the part number with the nominal conveyor length in inches.
Ex. 125R-0215-024



Aluminum extruded 2" high sides with seals**
Part No. 125R-0217-□□□

To Order:
Fill in the last three digits of the part number with the nominal conveyor length in inches.
Ex. 125R-0217-036



Aluminum extruded 2" high sides with wear strip
Part No. 125R-0216-□□□

To Order:
Fill in the last three digits of the part number with the nominal conveyor length in inches.
Ex. 125R-0216-060

Note 1: W = nominal belt width in inches
Note 2: All rails are sold in sets
Note 3: Side rails start 1 11/16" from tail end and stop 3 1/2" from drive end

* Dimension reflects use of standard urethane belt (MAA) see pages 52-53
** Side seals are not intended for cleated belts, high friction belts, or belt speeds exceeding 30 FPM

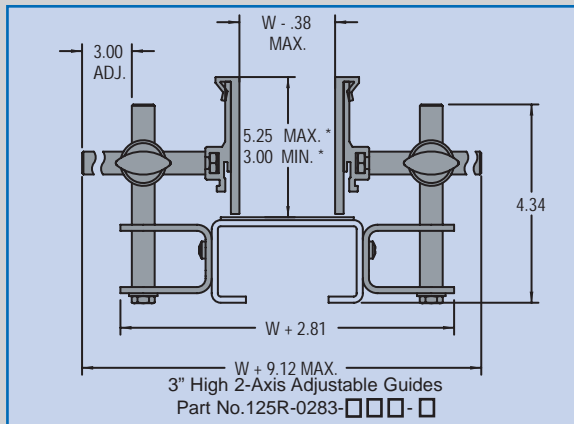
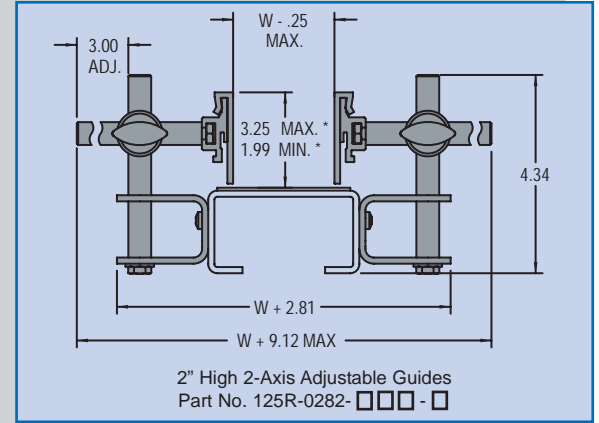
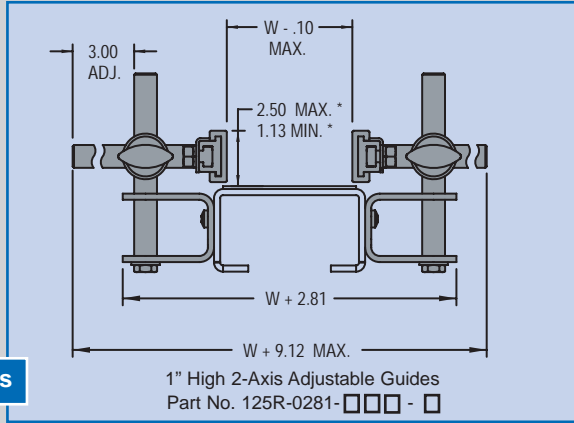
Custom fixed and flared side rails are available. For heights, consult factory

Adjustable Guide Rails



2-Axis Adjustable Guides

125R-0281-048-T pictured



To Order:

Fill in the last three digits of part number with the nominal length of the conveyor. Choose a set screw adjustment or a thumb wheel adjustment mechanism by indicating (S) for set screw and (T) for thumb wheel at the end of the part number.

Example 125R-0281-120-T

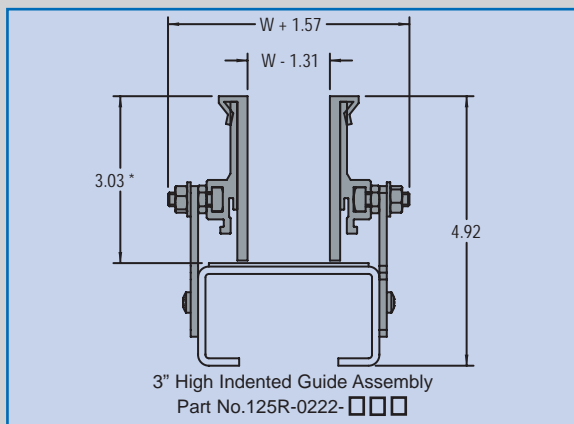
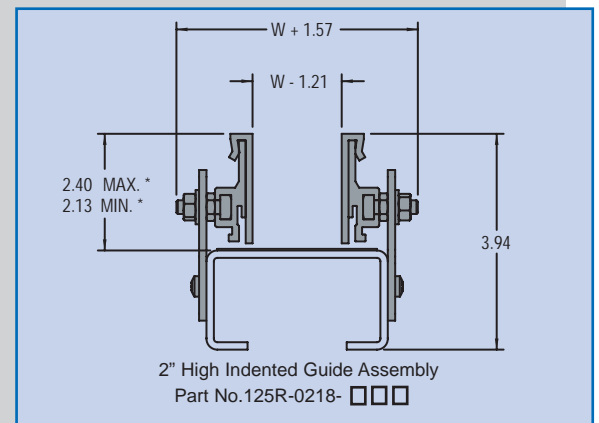
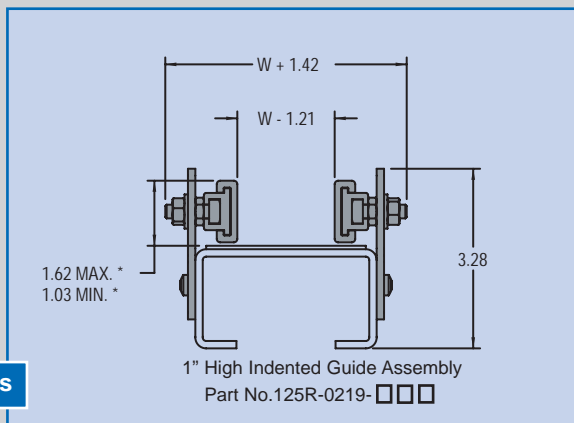
1" adjustable guide rail with wear strip and thumb wheel adjustment for a 120" long conveyor

The 2-Axis Adjustable Guides are designed to guide the product being conveyed. The rails can adjust vertically and horizontally, offering the end user the ultimate in flexibility. Choose from a set screw or thumb wheel adjustment. The thumb wheel is shown in the above picture and is ideal for quick adjustments, because no tools are required.



Indented Guides

125R-0219 pictured



To Order:

Fill in the last three digits of part number with the nominal conveyor length in inches.

Example 125R-0219-120

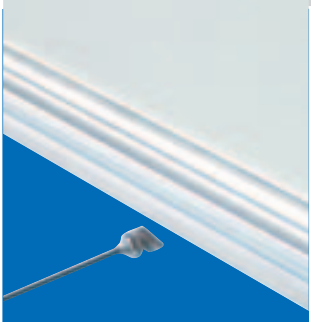
1" adjustable guide rail with wear strip for a 120" long conveyor

The Indented Guides are designed to work with cleated belts. Each cleated belt is indented slightly (see page 51). The Indented Guide spans the indentation, providing a pocket which surrounds the product being conveyed.

*Dimension reflects use of MAA belt. See pages 52-53.

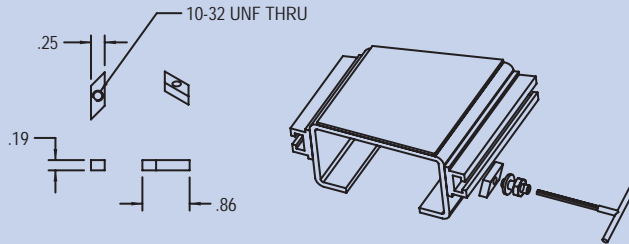


Tee Slotted Extrusions



Rotate-In Tee Nut

125R-0074 pictured



Rotate-In Tee Nut
 Part No. 125R-0074-035 (Qty 1)
 Part No. 125R-0074-035-SET (Qty 4)

Note:

The Rotate-In Tee Nut works with the 1" and 2" side rails, as well as the Single Tee Slot extrusion and the Multi Tee Slot extrusion.

To Order:

Use part number
 125R-0074-035 (Qty. 1)
 125R-0074-035-SET (Qty. 4)

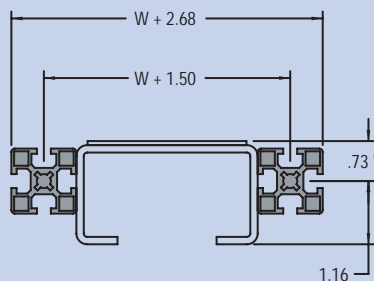
The Rotate-In Tee Nut is designed to hold lightweight brackets that have a thickness of .148" or under

The Rotate-In Tee Nut can be used with the following rails:
 1" - 125R-0174, 125R-0177, 125R-0178
 2" - 125R-0215, 125R-0217, 125R-0216

Tee-125R-0225, 125R-0199



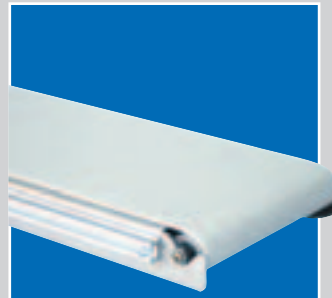
Multi Tee Slot



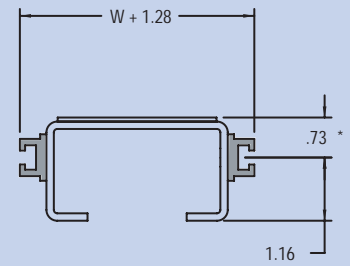
Multi Tee-Slot Side Assembly
 Part No. 125R-0225- □□□

To Order:

Fill in last three digits of part number with the nominal conveyor length in inches. Part number includes one set as shown in drawing.



Single Tee Slot



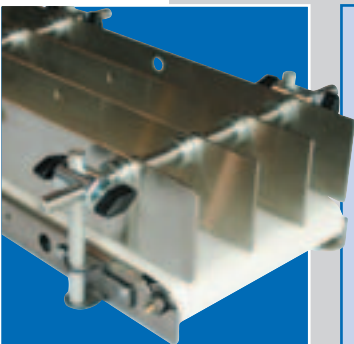
Single Tee-Slot Side Assembly
 Part No. 125R-0199- □□□

To Order:

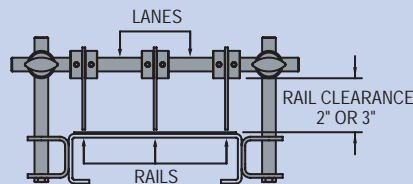
Fill in last three digits of part number with the nominal conveyor length in inches. Part number includes one set as shown in drawing.

*Dimensions reflect use of MAA belt. See pages 52-53.

Product Containment Accessories



Lane Dividers

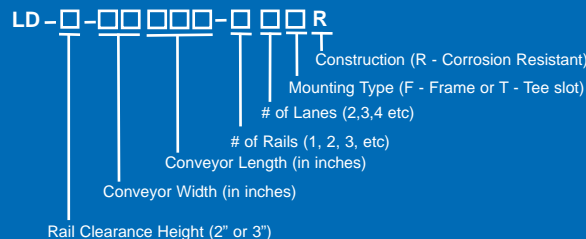


Lane Dividers
 For part number see below

Custom Sides Available

A number of other side options exist to meet the demands of a wide variety of applications. Please call our factory for details.

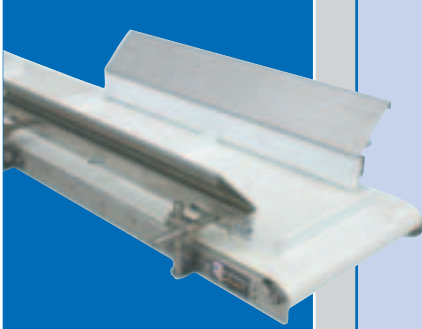
To Order:



Example

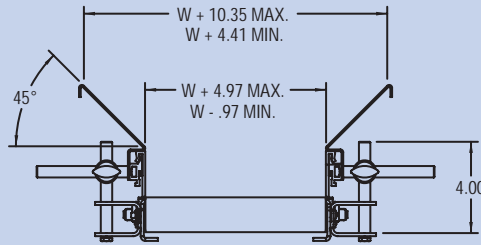
LD-2-08144-12FR
 2" Lane Divider for 8" wide 144" long conveyor. One rail with two lanes mounted to the conveyor frame

Flared Side Rails



Flared Side Rails

Note: Shown with 2-axis adjustable guide (sold separately) Part # 125R-0282-LLL



Flared Side Rails are ideal for applications that require a "drop zone" wider than the width of the conveyor. The rails attach to and require the use of the adjustable guide rails shown at the top of page 55. Additionally, the user can add other components (shown below) to help guide the product as needed. Note: Flared Side Rails should be ordered one size smaller than the nominal length of the conveyor.

To Order:

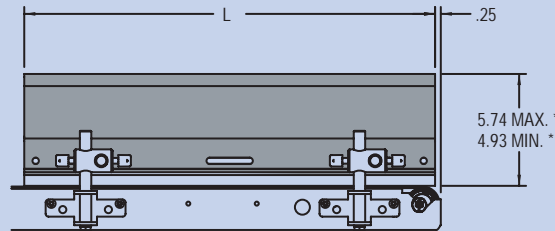
Z-1004-012	12" length
Z-1004-018	18" length
Z-1004-024	24" length
Z-1004-030	30" length
Z-1004-036	36" length
Z-1004-042	42" length
Z-1004-048	48" length

Example:

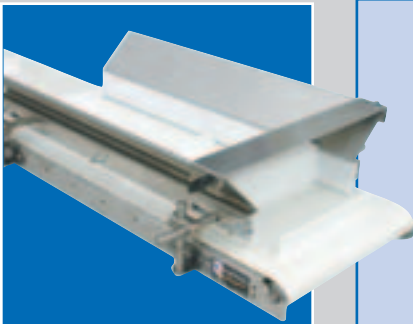
(1) Z-1004-036
A set of 36" long flared side rails

The rails are sold in sets and include mounting hardware

Note: Requires Part #125-0282-LLL shown on page 55

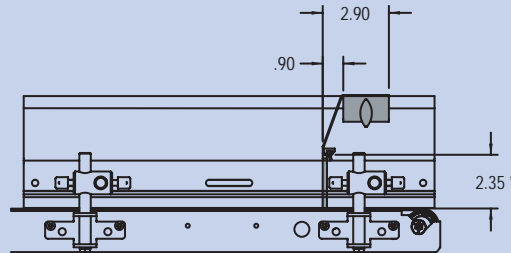


L = length of flared side rails



End Stops

Note: Shown with 2-axis adjustable guide AND Flared Side Rails (both sold separately) Part # 125R-0282-LLL and #Z-1004-LLL



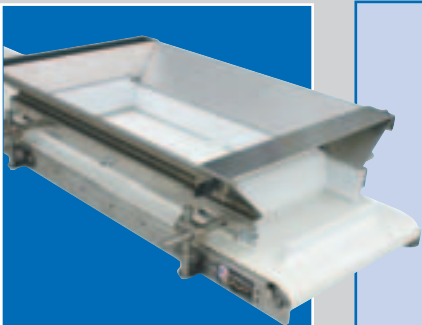
End Stops are used in conjunction with the Flared Side Rail. Stops are adjustable down the length of the rail. Note: End stops are available for the following width conveyors: 8", 10", 12", 18", and 24".

To Order:

8"	125-0234-08
10"	125-0234-10
12"	125-0234-12
18"	125-0234-18
24"	125-0234-24

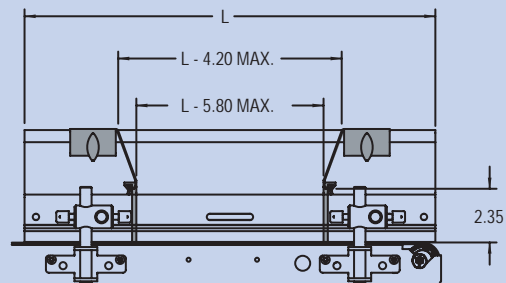
Example: (1) 125-0234-10
One end stop for a 10" wide conveyor equipped with flared side rails

Note: Designed to be compatible with 1" and 2" cleats. End stops are equipped with a swing gate to help contain product



Adjustable Hopper

Note: Shown with 2-axis adjustable guide AND Flared Side Rails (both sold separately) Part # 125-0282-LLL and #Z-1004-LLL



L = length of flared side rails

The Adjustable Hopper is used in conjunction with the Flared Side Rail. The hopper is made from (2) end stops, which are adjustable down the length of the rail. Available for the following width conveyors: 8", 10", 12", 18", and 24".

To Order:

Please order a quantity of 2:

8"	125-0234-08
10"	125-0234-10
12"	125-0234-12
18"	125-0234-18
24"	125-0234-24

Example: (2) 125-0234-18
Two end stops for an 18" wide conveyor equipped with flared side rails

Note: Designed to be compatible with 1" and 2" cleats. End stops are equipped with a swing gate to help contain product

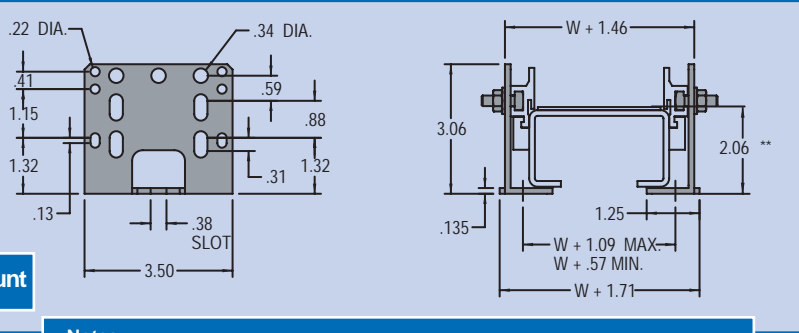
*Dimension reflects use of MAA belt. See pages 52-53.

Standard Mounts



Universal Adjustable Side Mount

125R-0181-04 pictured



Notes:

Brackets are universal and can work on either side of the conveyor. Frame mounted brackets can only be used with 1" high or lower cleats. T-Slot mounted brackets can only be used with 1/2" high or lower cleats.

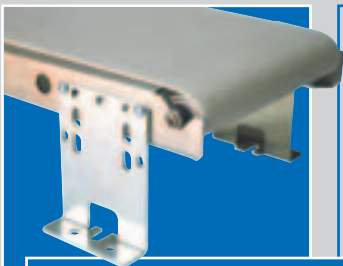
To Order:

Frame Mounted version attaches directly to the conveyor frame. The frame has mounting holes every 3".

The Tee Slot mounted version attaches to 1" siderails, 2" siderails, the single tee slot and the multi tee slot. See page 54 & 55.

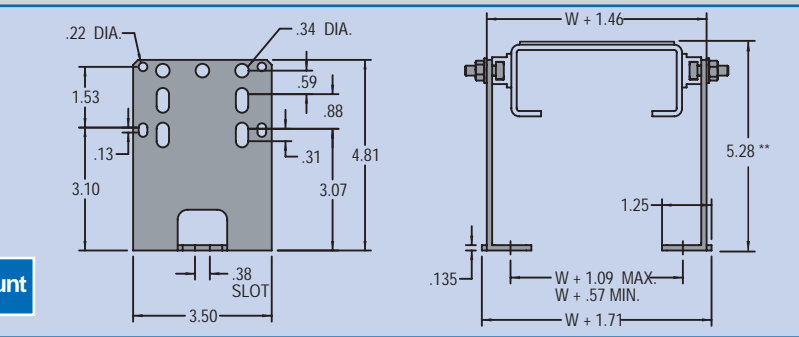
Part No. 125R-0181-01 (Tee Slot)*
Part No. 125R-0181-04 (Frame)*
Part No. 125R-0181-05 (For use with multi-tier stand)*

*Part No. denotes one bracket and necessary hardware



Universal Raised Side Mount

125R-0182-04 pictured



Notes:

Brackets are universal and can work on either side of the conveyor. Universal raised side mounts work with all cleat heights.

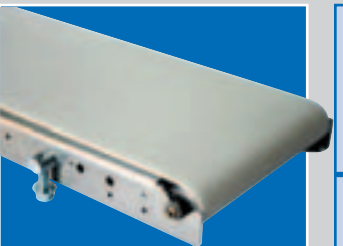
To Order:

Frame Mounted version attaches directly to the conveyor frame. The frame has mounting holes every 3".

The Tee Slot mounted version attaches to 1" siderails, 2" siderails, the single tee slot and the multi tee slot. See page 54 & 56.

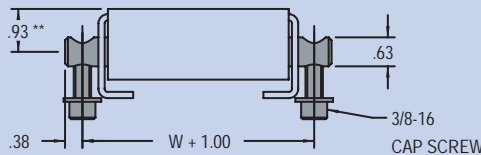
Part No. 125R-0182-01 (Tee Slot)*
Part No. 125R-0182-04 (Frame)*

*Part No. denotes one bracket and necessary hardware

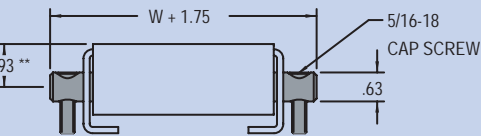


Rod Clamp Mount

Standard method for mounting to stands (fasteners included)



Alternate method for mounting to stands (fasteners not included)



Notes:

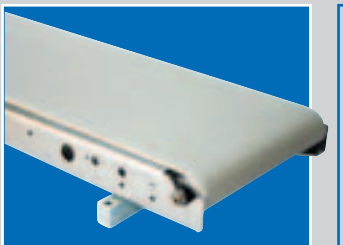
Mount cannot be used with Multi Tee or Single Tee Slotted Side Assembly Mount cannot be used with cleated belts

To Order:

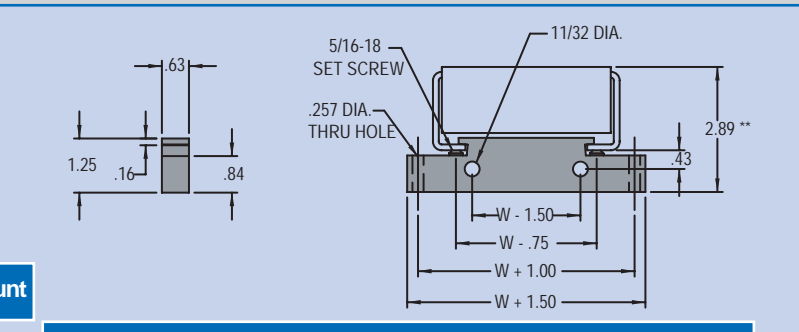
This mount uses existing through holes on the conveyor that are located 6.06" from tail end and 8.5" or 14.5" from drive end. This will mount the conveyor to a flat surface. To order, use the part number below and fill in the nominal conveyor width in inches for the last two digits.

Part No. 125R-0116- *
Example: 125R-0116-06*
Rod clamp mount for a 6" wide conveyor

*Part No. denotes one bracket and necessary hardware



Universal Bottom Mount



Notes:

Bottom mount can attach conveyor to a horizontal or vertical surface. This mount cannot be used with high adhesion or cleated belts.

To Order:

Attaches directly to the underside of the conveyor frame. To order use the part number below and fill in the nominal conveyor width in inches for the last two digits.

Part No. 125R-0011- *

Example: 125R-0011-04
Universal Bottom mount for a 4" wide conveyor

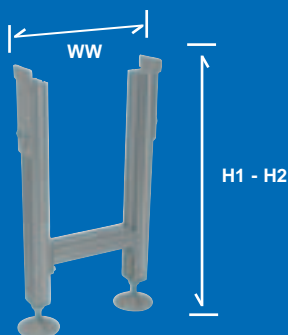
*Part No. denotes one bracket and necessary hardware

**Dimension reflects use of MAA belt. See pages 52-53.

Stands

NOTE: There is a 3" overall height adjustment with feet

Aluminum Exact Width Conveyor Stands



Stand Height Range: H1- H2 (in inches)

H1 - H2	H1 - H2
06 - 09	33 - 36
09 - 12	36 - 39
12 - 15	39 - 42
15 - 18	42 - 45
18 - 21	45 - 48
21 - 24	48 - 51
24 - 27	51 - 54
27 - 30	54 - 57
30 - 33	57 - 60

Stand Widths-WW (nominal conveyor width in inches)

02	03	04	06	08	10	12	18	24
----	----	----	----	----	----	----	----	----

To order:

Part No. 0182R - $\overbrace{\square \square}^{H1} - \overbrace{\square \square}^{H2} - \square \square^{WW}$

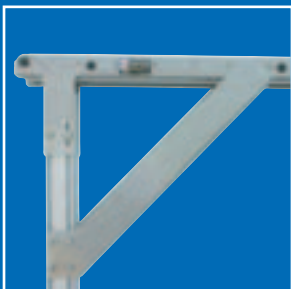
- 1) Choose height range from left and enter into H1 & H2 sections.
*Remember that the conveyor profile adds 1.89" to the height.
- 2) Enter conveyor width into WW section.

NOTE: No additional mounts are required.

NOTE: Conveyors 4" wide and under will have the stand framework on the outside of the conveyor; and the minimum height range is 12 - 15 inches.

Example: 0182R - 30 - 33 - 24 (Part No. includes one stand)

Angle Brace



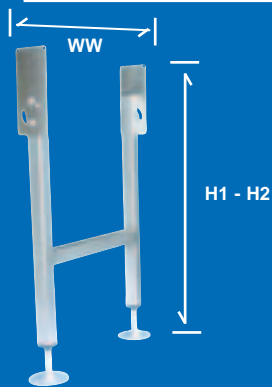
To order:

Part No.
125R-0189-00

For use with aluminum stands only.

Angle brace can be used on a 125 Series conveyor with a minimum top of belt height of 28". The angle brace can replace cross ties for conveyors 5' long and up. When used with casters, angle braces must be used on both stands. Order (1) per stand.

Stainless Steel Tubular Stand



Stand Height Range: H1- H2 (in inches)

H1 - H2
24 - 27
27 - 30
30 - 33
33 - 36
36 - 39
39 - 42
42 - 45

Stand Widths-WW (nominal conveyor width in inches)

02	03	04	06	08	10	12	18	24
----	----	----	----	----	----	----	----	----

To order:

Part No. 0188 - $\overbrace{\square \square}^{H1} - \overbrace{\square \square}^{H2} - \square \square^{WW}$

- 1) Choose height range from left and enter into H1 & H2 sections.
*Remember that the conveyor profile adds 1.89" to the height.
- 2) Enter conveyor width into WW section.

NOTE: No additional mounts are required. The mounts are included with the stand.

NOTE: Conveyors 4" wide and under will have the stand framework on the outside of the conveyor.

Example: 0188 - 30 - 33 - 18 (Part No. includes one stand)

Casters



To order:

Part No. 125R-0122-04
Swivel locking caster
Order (2) per stand

Casters can be added to either aluminum or steel stands. Swivel locking casters increase stand height by 5.50".

Casters should only be used with stands that are 1/3 as wide as they are tall.

Swivel-In Tee Nut



To order:

Part No.
125-0074-036 (Qty 1)
125-0074-036-SET (Qty 4)

The Swivel-In Tee Nut is ideal for mounting brackets to an aluminum stand, and allows quick mounting location changes.

Note: Swivel-In Tee Nut is zinc plated
1/4-20 thread-in Tee Nut is provided for attaching accessories.

NOTE: All applications will require the end user to properly lag stands and ensure stability. Because every application and installation is different, the functionality and performance of the supports depend on the end user. QC Industries can aid in determining the supports your application requires.



Drive Sizing Technical Data

The equivalent load was determined in the conveyor technical data pages (pages 46 and 50). To choose a gear motor combination that works best for the application, the next step is to convert that equivalent load into the torque required and size a drive based upon its use. The user must know the belt speed (in feet per minute), service factor (determined below), and the duty cycle of the application. The steps below guide the user through this process. These steps will ultimately compare the torque required to move the load on the conveyor (Required Conveyor Drive Torque) and the torque the drive train is capable of producing (Supplied Drive Train Torque).

1. Calculate Required Conveyor Drive Torque (RCDT) 1. _____

Enter the equivalent load the drive must handle (from pages 46 or 50). Divide this number by 6. The result equals the torque required for the application, or the required conveyor drive torque (RCDT). Enter RCDT on Line One.

2. Select Belt Speed & Enter Drive Train Torque (DTT) 2. _____

Choose the belt speed from one of the following pages (63 or 65), and write down the drive train torque (DTT) for the selected speed. Please note that if you are choosing a top or bottom drive, you may use a timing belt. For heavy duty drives (listed on page 65), the drive train torque is lower if using a timing belt. Enter the drive train torque on Line Two.

3. Enter Service Factor (SF) 3. _____

Use Chart 60-A below based upon the hours of operation per day as well as starts and stops per hour. Enter the result on Line Three.

4. Calculate Supplied Drive Train Torque (SDTT) 4. _____

Divide the drive train torque (DDT) by the service factor (SF). This result equals the supplied drive train torque (SDTT). Enter the result on Line Four.

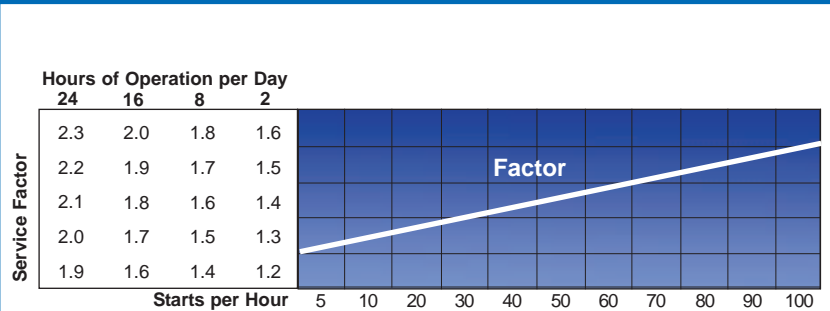
5. Determine Functionality

Compare Line 4 (the supplied drive train torque [SDTT]) to Line 1 (the required conveyor drive torque [RCDT]). If the SDTT is equal to or greater than RCDT, then you have selected the proper drive. SDTT > RCDT. If not, then:

- A) Slow down the belt speed
- B) Choose a wider conveyor
- C) Consult factory

Proceed to the next page for instructions on how to use the remaining drive pages.

Service Factor - Chart 60-A



Example:

Equivalent load = 100 (per conveyor technical data page)
 $100 / 6 = 17$ (RCDT)
 30 FPM (From page 63 - standard duty top drive - fixed speed)
 33 inch lbs. of torque (DTT)
 Class II (using timing belt on a top drive)
 8 hours per day with no starts and stops (Service Factor is 1.5)
 $33 / 1.5 = 22$ inch lbs. (SDTT)

RCDT = 17
 SDTT = 22

$22 \geq 17$ (Gearmotor assembly will provide adequate torque)

Example:

Equivalent load = 300 (per conveyor technical data page)
 $300 / 6 = 50.0$ (RCDT)
 50 FPM (From page 65 - heavy duty bottom drive - fixed speed)
 87 inch lbs. of torque (DTT)
 Class II (using timing belt on a bottom drive)
 16 hours per day with (10) starts and stops (Service Factor is 1.7)
 $87 / 1.7 = 51.1$ inch lbs. (SDTT)

RCDT = 50.0
 SDTT = 51.1

$51.1 \geq 50.0$ (Gearmotor assembly will provide adequate torque)

How to Use the Following Pages

The following pages contain information on types and locations of available QC drives, presented in a clear, concise manner. Simply follow the two-page spread from left to right, and note the steps listed here.

Mounting Arrangement

Drawings

Drive locations

Step 2

Sizing information

Voltage

Step 4

125 Series Corrosion Resistant Standard Drives

Step 1

Side Drive

Remove Drive

Top Drive

Bottom Drive

Standard Duty Electric - Fixed Speed - Side Drive

Sizing Information		Mounting Part Number				Motor Part Number				Motor Information		
FPM*	Torque in Lbs.	Prefix	Mounting	Position*	Suffix	Prefix	Voltage	Ratio	Suffix	HP	Voltage	AMP
4.5	88	M1-	T	1 or 3	SE- 5M	25	05	1-	012	1/19	115v 1PH TENV	0.9
10	76	M1-	T	1 or 3	SE- 5M	25	05	1-	025	1/19	115v 1PH TENV	0.9
18	50	M1-	T	1 or 3	SE- 5M	25	05	1-	030	1/19	115v 1PH TENV	0.9
21	41	M1-	T	1 or 3	SE- 5M	25	05	1-	018	1/19	115v 1PH TENV	0.9
30	33	M1-	T	1 or 3	SE- 5M	25	05	1-	018	1/19	115v 1PH TENV	0.9
43	23	M1-	T	1 or 3	SE- 5M	25	05	1-	012	1/19	115v 1PH TENV	0.9

Standard Duty Electric - Fixed Speed - Remove Drive

Sizing Information		Mounting Part Number				Motor Part Number				Motor Information		
FPM*	Torque in Lbs.	Prefix	Mounting	Position*	Suffix	Prefix	Voltage	Ratio	Suffix	HP	Voltage	AMP
4.5	88	M1-	R	1 or 3	SE- 5M	25	05	1-	012	1/19	115v 1PH TENV	0.9
10	76	M1-	R	1 or 3	SE- 5M	25	05	1-	025	1/19	115v 1PH TENV	0.9
18	50	M1-	R	1 or 3	SE- 5M	25	05	1-	030	1/19	115v 1PH TENV	0.9
21	41	M1-	R	1 or 3	SE- 5M	25	05	1-	018	1/19	115v 1PH TENV	0.9
30	33	M1-	R	1 or 3	SE- 5M	25	05	1-	018	1/19	115v 1PH TENV	0.9
43	23	M1-	R	1 or 3	SE- 5M	25	05	1-	012	1/19	115v 1PH TENV	0.9

Standard Duty Electric - Fixed Speed - Top Drive

Sizing Information		Mounting Part Number				Motor Part Number				Motor Information		
FPM*	Torque in Lbs.	Prefix	Mounting	Position*	Suffix	Prefix	Voltage	Ratio	Suffix	HP	Voltage	AMP
4.5	88	M1-	T	1 or 3	SE- 5M	25	05	1-	012	1/19	115v 1PH TENV	0.9
10	76	M1-	T	1 or 3	SE- 5M	25	05	1-	025	1/19	115v 1PH TENV	0.9
18	50	M1-	T	1 or 3	SE- 5M	25	05	1-	030	1/19	115v 1PH TENV	0.9
21	41	M1-	T	1 or 3	SE- 5M	25	05	1-	018	1/19	115v 1PH TENV	0.9
30	33	M1-	T	1 or 3	SE- 5M	25	05	1-	018	1/19	115v 1PH TENV	0.9
43	23	M1-	T	1 or 3	SE- 5M	25	05	1-	012	1/19	115v 1PH TENV	0.9

Standard Duty Electric - Fixed Speed - Bottom Drive

Sizing Information		Mounting Part Number				Motor Part Number				Motor Information		
FPM*	Torque in Lbs.	Prefix	Mounting	Position*	Suffix	Prefix	Voltage	Ratio	Suffix	HP	Voltage	AMP
4.5	88	M1-	B	1 or 3	SE- 5M	25	05	1-	012	1/19	115v 1PH TENV	0.9
10	76	M1-	B	1 or 3	SE- 5M	25	05	1-	025	1/19	115v 1PH TENV	0.9
18	50	M1-	B	1 or 3	SE- 5M	25	05	1-	030	1/19	115v 1PH TENV	0.9
21	41	M1-	B	1 or 3	SE- 5M	25	05	1-	018	1/19	115v 1PH TENV	0.9
30	33	M1-	B	1 or 3	SE- 5M	25	05	1-	018	1/19	115v 1PH TENV	0.9
43	23	M1-	B	1 or 3	SE- 5M	25	05	1-	012	1/19	115v 1PH TENV	0.9

Step 1:
Choose mounting arrangement & location

Step 2:
Choose speed

Step 3:
Run drive sizing calculations listed on Page 60

Step 4:
Choose voltage requirements

Step 5:
Put together two part numbers, drive mounting package and gearmotor, by following from left to right

Speed

Mounting

Step 5

Voltage

Step 3
(p. 60)

Standard Duty Electric - Fixed Speed - Top Drive

Sizing Information		Mounting Part Number				Motor Part Number				Motor Information		
FPM*	Torque in Lbs.	Prefix	Mounting	Position*	Suffix	Prefix	Voltage	Ratio	Suffix	HP	Voltage	AMP
4.5	88	M1-	T	1 or 3	SE- 5M	25	05	1-	012	1/19	115v 1PH TENV	0.9
10	76	M1-	T	1 or 3	SE- 5M	25	05	1-	025	1/19	115v 1PH TENV	0.9
18	50	M1-	T	1 or 3	SE- 5M	25	05	1-	030	1/19	115v 1PH TENV	0.9
21	41	M1-	T	1 or 3	SE- 5M	25	05	1-	018	1/19	115v 1PH TENV	0.9
30	33	M1-	T	1 or 3	SE- 5M	25	05	1-	018	1/19	115v 1PH TENV	0.9
43	23	M1-	T	1 or 3	SE- 5M	25	05	1-	012	1/19	115v 1PH TENV	0.9

*Speeds Vary +/- 4 FPM *See Drive Location Chart

Torque

Timing Pulley Combinations

Gear Reducer

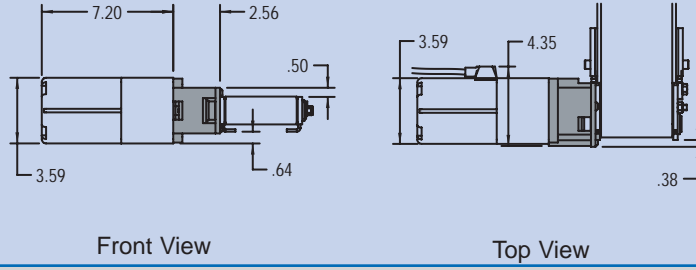
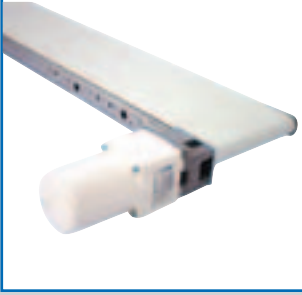
Horsepower

Voltage Key

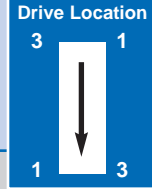
1	115VAC 1 PH
3	230/460 VAC 3 PH
V	90 VDC w/controller
D	90 VDC w/o controller



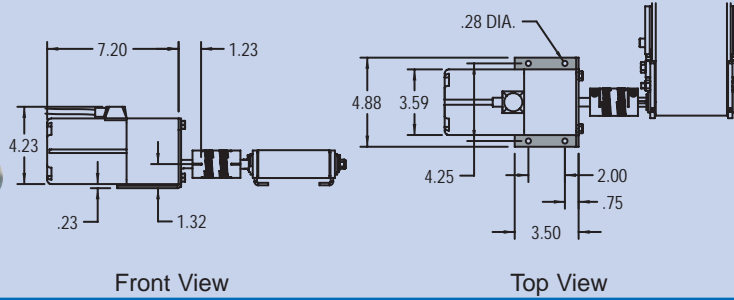
Side Drive



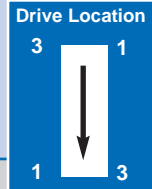
Note:
This mounting arrangement allows for the drive to be mounted on either side of the conveyor with the motor inline with the drive pulley. Reference the drawings to the left for dimensional information. Reference the tables to the right for mounting package and gearmotor ordering information. The box immediately left shows the possible drive positions.



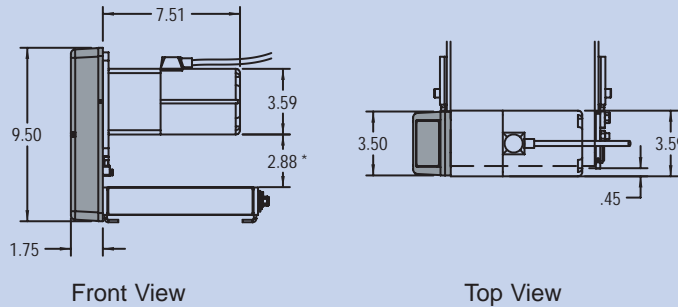
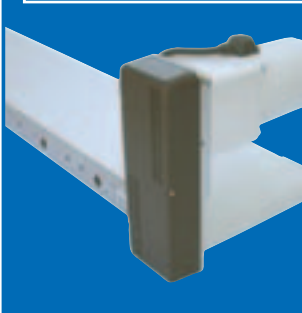
Remote Drive



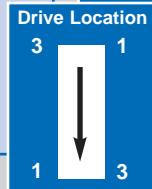
Note:
This mounting arrangement allows for the drive to be mounted away from the conveyor and on either side of the conveyor, with the motor inline with the drive pulley. Reference the drawings to the left for dimensional information. Reference the tables to the right for mounting package and gearmotor ordering information. The box immediately left shows the possible drive positions.



Top Drive

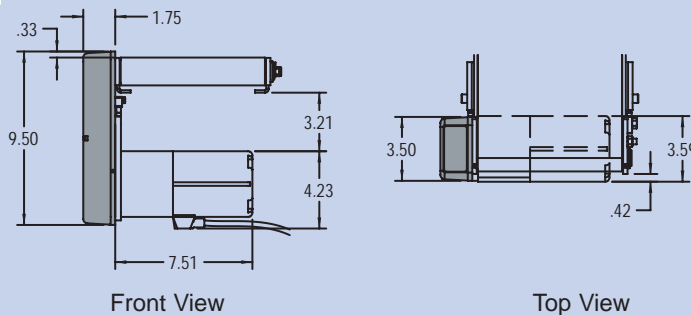
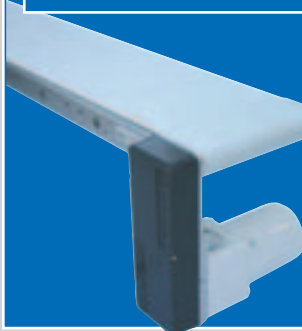


Note:
This mounting arrangement allows for the drive to be mounted above the conveyor belt, on either side of the conveyor, and with the motor inline with the drive pulley. Reference the drawings to the left for dimensional information. Reference the tables to the right for mounting package and gearmotor ordering information. The box immediately left shows the possible drive positions.

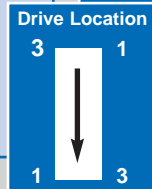


*Dimension reflects use of MAA belt. See pages 52-53.

Bottom Drive



Note:
This mounting arrangement allows for the drive to be mounted below the conveyor belt, on either side of the conveyor, and with the motor inline with the drive pulley. Reference the drawings to the left for dimensional information. Reference the tables to the right for mounting package and gearmotor ordering information. The box immediately left shows the possible drive positions.



Standard Duty Electric - Fixed Speed - Side Drive

Sizing Information

FPM*	Torque in Lbs.
4.5	88
10	69
18	38
21	32
30	25
43	18

*Speeds Vary up to +/- 4 FPM

Mounting Part Number

Example: M1-S3SE-CR

Prefix	Mounting	Position*	Suffix
M1-	S	1 or 3	SE-CR
M1-	S	1 or 3	SE-CR
M1-	S	1 or 3	SE-CR
M1-	S	1 or 3	SE-CR
M1-	S	1 or 3	SE-CR
M1-	S	1 or 3	SE-CR

*See Drive Location Chart

Motor Part Number

Example: 051-025-WD

Prefix	Voltage	Ratio	Suffix
05	1-	120	-WD
05	1-	050	-WD
05	1-	030	-WD
05	1-	025	-WD
05	1-	018	-WD
05	1-	012	-WD

Motor Information

HP	Voltage	AMP
1/19	115v 1PH TENV	0.7
1/19	115v 1PH TENV	0.7
1/19	115v 1PH TENV	0.7
1/19	115v 1PH TENV	0.7
1/19	115v 1PH TENV	0.7
1/19	115v 1PH TENV	0.7

Standard Duty Electric - Fixed Speed - Remote Drive

Sizing Information

FPM*	Torque in Lbs.
4.5	88
10	69
18	38
21	32
30	25
43	18

*Speeds Vary up to +/- 4 FPM

Mounting Part Number

Example: M1-R1SE-CR

Prefix	Mounting	Position*	Suffix
M1-	R	1 or 3	SE-CR
M1-	R	1 or 3	SE-CR
M1-	R	1 or 3	SE-CR
M1-	R	1 or 3	SE-CR
M1-	R	1 or 3	SE-CR
M1-	R	1 or 3	SE-CR

*See Drive Location Chart

Motor Part Number

Example: 051-018-WD

Prefix	Voltage	Ratio	Suffix
05	1-	120	-WD
05	1-	050	-WD
05	1-	030	-WD
05	1-	025	-WD
05	1-	018	-WD
05	1-	012	-WD

Motor Information

HP	Voltage	AMP
1/19	115v 1PH TENV	0.7
1/19	115v 1PH TENV	0.7
1/19	115v 1PH TENV	0.7
1/19	115v 1PH TENV	0.7
1/19	115v 1PH TENV	0.7
1/19	115v 1PH TENV	0.7

Mounting Part Number Example:
M1-S1SE-CR (Side Drive Mounting)

Motor Part No. Example:
051-120-WD (115v 1PH Gearmotor @ 4.5 FPM)

Standard Duty Electric - Fixed Speed - Top Drive

Sizing Information

FPM*	Torque in Lbs.
4.5	88
10	69
18	38
21	32
30	25
43	18

*Speeds Vary up to +/- 4 FPM

Mounting Part Number

Example: M1-T1SE-5M2525-CR

Prefix	Mounting	Position*	Suffix	Belt	GMtr/Sprkt	Conv. Sprkt	Suffix
M1-	T	1 or 3	SE-	5M	25	25	-CR
M1-	T	1 or 3	SE-	5M	25	25	-CR
M1-	T	1 or 3	SE-	5M	25	25	-CR
M1-	T	1 or 3	SE-	5M	25	25	-CR
M1-	T	1 or 3	SE-	5M	25	25	-CR
M1-	T	1 or 3	SE-	5M	25	25	-CR

*See Drive Location Chart

Motor Part Number

Example: 051-025-WD

Prefix	Voltage	Ratio	Suffix
05	1-	120	-WD
05	1-	050	-WD
05	1-	030	-WD
05	1-	025	-WD
05	1-	018	-WD
05	1-	012	-WD

Motor Information

HP	Voltage	AMP
1/19	115v 1PH TENV	0.7
1/19	115v 1PH TENV	0.7
1/19	115v 1PH TENV	0.7
1/19	115v 1PH TENV	0.7
1/19	115v 1PH TENV	0.7
1/19	115v 1PH TENV	0.7

Standard Duty Electric - Fixed Speed - Bottom Drive

Sizing Information

FPM*	Torque in Lbs.
4.5	88
10	69
18	38
21	32
30	25
43	18

*Speeds Vary up to +/- 4 FPM

Mounting Part Number

Example: M1-B3SE-5M2525-CR

Prefix	Mounting	Position*	Suffix	Belt	GMtr/Sprkt	Conv. Sprkt	Suffix
M1-	B	1 or 3	SE-	5M	25	25	-CR
M1-	B	1 or 3	SE-	5M	25	25	-CR
M1-	B	1 or 3	SE-	5M	25	25	-CR
M1-	B	1 or 3	SE-	5M	25	25	-CR
M1-	B	1 or 3	SE-	5M	25	25	-CR
M1-	B	1 or 3	SE-	5M	25	25	-CR

*See Drive Location Chart

Motor Part Number

Example: 051-012-WD

Prefix	Voltage	Ratio	Suffix
05	1-	120	-WD
05	1-	050	-WD
05	1-	030	-WD
05	1-	025	-WD
05	1-	018	-WD
05	1-	012	-WD

Motor Information

HP	Voltage	AMP
1/19	115v 1PH TENV	0.7
1/19	115v 1PH TENV	0.7
1/19	115v 1PH TENV	0.7
1/19	115v 1PH TENV	0.7
1/19	115v 1PH TENV	0.7
1/19	115v 1PH TENV	0.7

Mounting Part Number Example:
M1-T3SE-5M2525-CR (Top Drive Mounting Pkg w/Timing Belt)

Motor Part No. Example:
051-050-WD (115v 1PH Gearmotor @ 6.0 TO 12.0 FPM)

Notes:

1. Motors are UL, CSA and CE approved
2. Torque values are based upon start-up torque

Gearmotors include a 6' cord

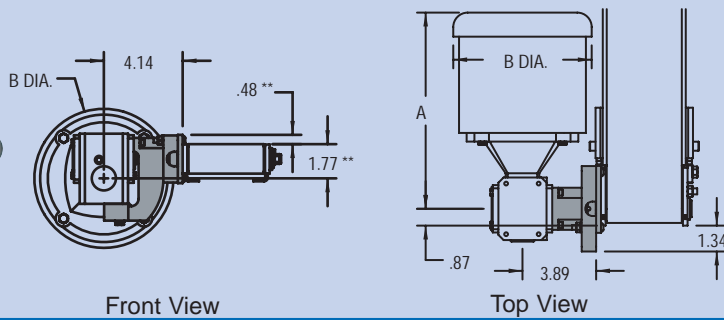
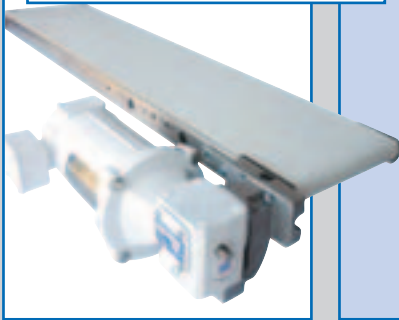
QC Industries

513.753.6000

63

125 Series Corrosion Resistant Heavy Duty Drives

Side Drive



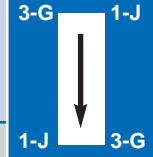
*For "A" and "B" dimensions, see Motor Information table at the bottom of the page.

Note:

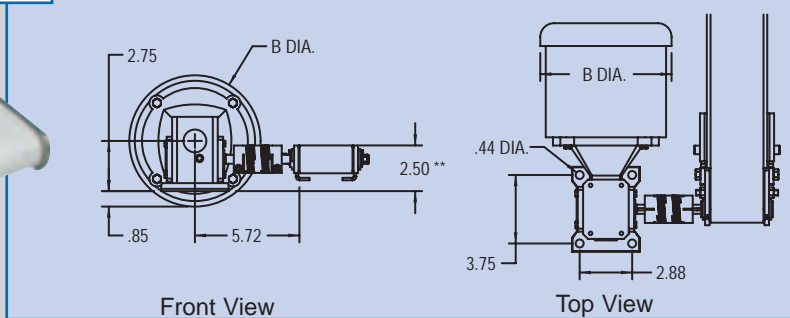
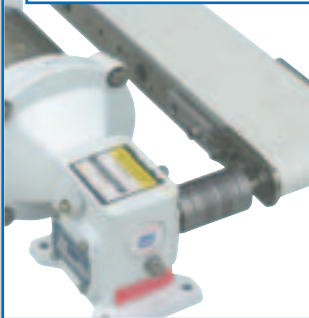
This mounting arrangement allows for the drive to be mounted on either side of the conveyor with the motor perpendicular with the drive pulley. Reference the drawings to the left for dimensional information. Reference

the tables to the right for mounting package and gearmotor ordering information. The box immediately left shows the possible drive positions.

Drive Location



Remote Drive



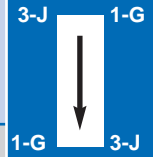
*For "A" and "B" dimensions, see Motor Information table at the bottom of the page.

Note:

This mounting arrangement allows for the drive to be mounted away from the conveyor and on either side of the conveyor, with the motor perpendicular with the drive pulley. Reference the drawings to the left for dimensional information. Reference

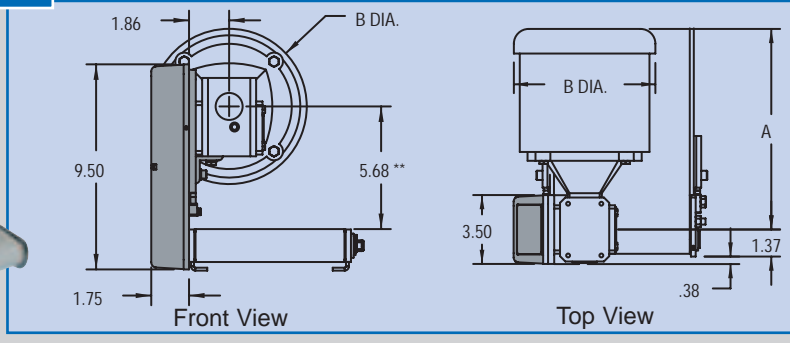
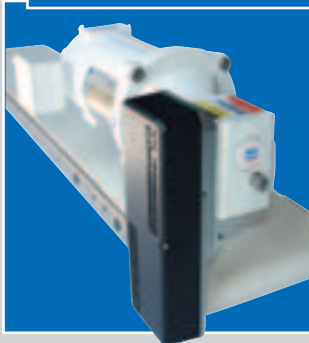
the tables to the right for mounting package and gearmotor ordering information. The box immediately left shows the possible drive positions.

Drive Location



Note: 56 frame gearmotors extend below gearbox mounting plate and may require shimming

Top Drive



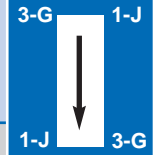
*For "A" and "B" dimensions, see Motor Information table at the bottom of the page.

Note:

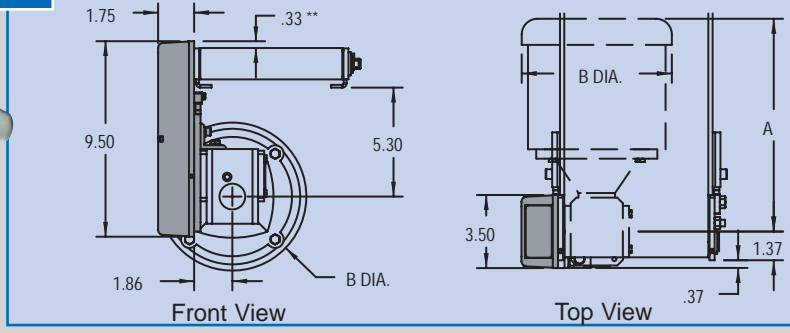
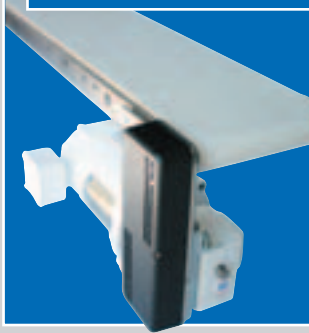
This mounting arrangement allows for the drive to be mounted above the conveyor belt, on either side of the conveyor, and with the motor perpendicular with the drive pulley. Reference the drawings to the left for dimensional information. Reference

the tables to the right for mounting package and gearmotor ordering information. The box immediately left shows the possible drive positions.

Drive Location



Bottom Drive



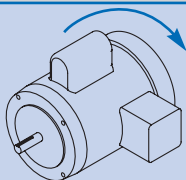
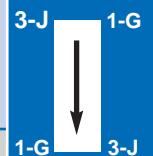
*For "A" and "B" dimensions, see Motor Information table at the bottom of the page.

Note:

This mounting arrangement allows for the drive to be mounted below the conveyor belt, on either side of the conveyor, and with the motor perpendicular with the drive pulley. Reference the drawings to the left for dimensional information. Reference

the tables to the right for mounting package and gearmotor ordering information. The box immediately left shows the possible drive positions.

Drive Location



The motor can be rotated in 90° increments to achieve alternate orientations when attaching it to the gearbox. This allows the user flexibility when deciding where the motor capacitor and gearbox will be located.

Motor Dimension Chart

	501	503	50V	503 (ID)
A	13.85	13.22	15.84	14.08
B	6.15	6.19	4.98	7.23

**Dimension reflects use of MAA belt. See pages 52-53.

Heavy Duty Electric - Fixed or Variable Speed - Side Drive

Sizing Information

FPM*	Torque in Lbs.
12	120
15	128
20	132
30	130
40	128
60	107
120	82

*Speeds Vary up to +/- 4 FPM

Mounting Part Number

Example: M1-S1J0-CR

Prefix	Mounting	Position*	Suffix
M1-	S	1J or 3G	0-CR
M1-	S	1J or 3G	0-CR
M1-	S	1J or 3G	0-CR
M1-	S	1J or 3G	0-CR
M1-	S	1J or 3G	0-CR
M1-	S	1J or 3G	0-CR
M1-	S	1J or 3G	0-CR

*See Drive Location Chart

Motor Part Number

Example: 501 - 50J-WD

Prefix	Voltage	Ratio	Gearbox Hand	Suffix
50	1,3,V, D-	50	G or J	-WD
50	1,3,V, D-	40	G or J	-WD
59	1,3,V, D-	30	G or J	-WD
50	1,3,V, D-	20	G or J	-WD
50	1,3,V, D-	15	G or J	-WD
50	1,3,V, D-	10	G or J	-WD
50	1,3,V, D-	05	G or J	-WD

Motor Information

Voltage

HP	115/230 Amp	230/460 Amp	DC Amp	Face
1/2	8.0/4.0	1.6/0.8	5	56C
1/2	8.0/4.0	1.6/0.8	5	56C
1/2	8.0/4.0	1.6/0.8	5	56C
1/2	8.0/4.0	1.6/0.8	5	56C
1/2	8.0/4.0	1.6/0.8	5	56C
1/2	8.0/4.0	1.6/0.8	5	56C
1/2	8.0/4.0	1.6/0.8	5	56C

Heavy Duty Electric - Fixed or Variable Speed -Remote Drive

Sizing Information

FPM*	Torque in Lbs.
12	120
15	128
20	132
30	130
40	128
60	107
120	82

*Speeds Vary up to +/- 4 FPM

Mounting Part Number

Example: M1-S1J0-CR

Prefix	Mounting	Position*	Suffix
M1-	R	1G or 3J	0-CR
M1-	R	1G or 3J	0-CR
M1-	R	1G or 3J	0-CR
M1-	R	1G or 3J	0-CR
M1-	R	1G or 3J	0-CR
M1-	R	1G or 3J	0-CR
M1-	R	1G or 3J	0-CR

*See Drive Location Chart

Motor Part Number

Example: 501 - 50J-WD

Prefix	Voltage	Ratio	Gearbox Hand	Suffix
50	1,3,V, D-	50	G or J	-WD
50	1,3,V, D-	40	G or J	-WD
50	1,3,V, D-	30	G or J	-WD
50	1,3,V, D-	20	G or J	-WD
50	1,3,V, D-	15	G or J	-WD
50	1,3,V, D-	10	G or J	-WD
50	1,3,V, D-	05	G or J	-WD

Motor Information

Voltage

HP	115/230 Amp	230/460 Amp	DC Amp	Face
1/2	8.0/4.0	1.6/0.8	5	56C
1/2	8.0/4.0	1.6/0.8	5	56C
1/2	8.0/4.0	1.6/0.8	5	56C
1/2	8.0/4.0	1.6/0.8	5	56C
1/2	8.0/4.0	1.6/0.8	5	56C
1/2	8.0/4.0	1.6/0.8	5	56C
1/2	8.0/4.0	1.6/0.8	5	56C

Voltage Key

1	115 VAC 1 PH	For optional AC controls, see p. 66
3	230/460 VAC 3 PH	For optional AC controls, see p. 66
V	90 VDC w/controller	See controller on p. 66
D	90 VDC w/o controller	Customer to supply controller

Heavy Duty Electric - Fixed or Variable Speed - Top or Bottom Drive

Sizing Information

FPM*	Torque (DTT) Inch Lbs.
12	95
15	95
20	98
30	93
40	89
50	87
60	84
75	89
100	67
120	82
150	68
175	59
200	51
225	46

*Speeds Vary up to +/- 4 FPM

Mounting Part Number

Example: M1-B3J0-5M2525-CR

Prefix	Mounting	Position*	Suffix	Belt	GMtr. Sprkt	Conv Sprkt	Suffix
M1-	T or B	1J, 1G, 3J or 3G	0-	5M	25	25	-CR
M1-	T or B	1J, 1G, 3J or 3G	0-	5M	25	25	-CR
M1-	T or B	1J, 1G, 3J or 3G	0-	5M	25	25	-CR
M1-	T or B	1J, 1G, 3J or 3G	0-	5M	25	25	-CR
M1-	T or B	1J, 1G, 3J or 3G	0-	5M	25	25	-CR
M1-	T or B	1J, 1G, 3J or 3G	0-	5M	30	25	-CR
M1-	T or B	1J, 1G, 3J or 3G	0-	5M	25	25	CR
M1-	T or B	1J, 1G, 3J or 3G	0-	5M	30	25	-CR
M1-	T or B	1J, 1G, 3J or 3G	0-	5M	40	25	-CR
M1-	T or B	1J, 1G, 3J or 3G	0-	5M	25	25	-CR
M1-	T or B	1J, 1G, 3J or 3G	0-	5M	30	25	-CR
M1-	T or B	1J, 1G, 3J or 3G	0-	5M	34	25	-CR
M1-	T or B	1J, 1G, 3J or 3G	0-	5M	40	25	-CR
M1-	T or B	1J, 1G, 3J or 3G	0-	5M	44	25	-CR

*See Drive Location Chart

Motor Part No.

Example: 503-05J-WD

Prefix	Voltage	Ratio	Gearbox Hand	Suffix
50	1,3,V, D-	50	G or J	-WD
50	1,3,V, D-	40	G or J	-WD
50	1,3,V, D-	30	G or J	-WD
50	1,3,V, D-	20	G or J	-WD
50	1,3,V, D-	15	G or J	-WD
50	1,3,V, D-	15	G or J	-WD
50	1,3,V, D-	10	G or J	-WD
50	1,3,V, D-	10	G or J	-WD
50	1,3,V, D-	10	G or J	-WD
50	1,3,V, D-	05	G or J	-WD
50	1,3,V, D-	05	G or J	-WD
50	1,3,V, D-	05	G or J	-WD
50	1,3,V, D-	05	G or J	-WD

Motor Information

Voltage

HP	115/230 Amp	230/460 Amp	DC Amp	Face
1/2	8.0/4.0	1.6/0.8	5	56C
1/2	8.0/4.0	1.6/0.8	5	56C
1/2	8.0/4.0	1.6/0.8	5	56C
1/2	8.0/4.0	1.6/0.8	5	56C
1/2	8.0/4.0	1.6/0.8	5	56C
1/2	8.0/4.0	1.6/0.8	5	56C
1/2	8.0/4.0	1.6/0.8	5	56C
1/2	8.0/4.0	1.6/0.8	5	56C
1/2	8.0/4.0	1.6/0.8	5	56C
1/2	8.0/4.0	1.6/0.8	5	56C
1/2	8.0/4.0	1.6/0.8	5	56C
1/2	8.0/4.0	1.6/0.8	5	56C
1/2	8.0/4.0	1.6/0.8	5	56C

Mounting Part Number Example:
M1-T1J0-5M4025-CR (Top Drive Mounting Pkg w/Timing Belt)

Motor Part No. Example:
501-10J-WD (115V 1Ph Gearmotor@100 FPM)

Notes:

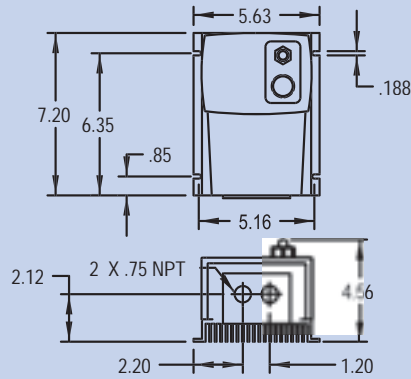
1. ALL above gearmotors are UL and CSA approved
2. Torque values are based upon running torque
3. Inverter duty variable frequency rated motors are available in 1/2HP. Add an ID to the end of the part number (230 VAC 3 PH motors only)
4. Please note that all inverter duty motors have a non-removable foot mount on them

See Drive Accessories (page 66) for optional controllers

Drive Accessories



Washdown DC Control



Specifications/Features:

115 V AC, 1 phase input, 90 V DC, 1 hp max output
 230 V AC, 1 phase input, 180 V DC, 2 hp max output
 30:1 speed range
 UL/ULc/CE
 NEMA 4X Enclosure
 Speed adjustment potentiometer
 Forward/Off/Reverse switch
 Min/Max & Accel/Decel settings

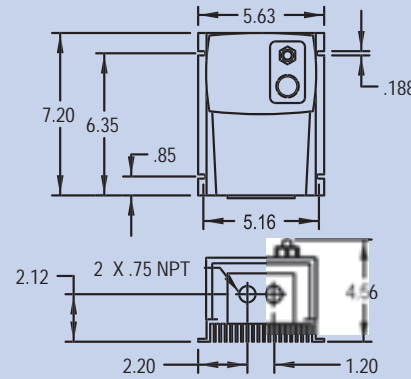
To Order:

Part Number: 125-0054-38 NEMA 4X DC Control

This 4X washdown controller can be used in a wet or dusty environment.



Washdown AC Control



Specifications/Features:

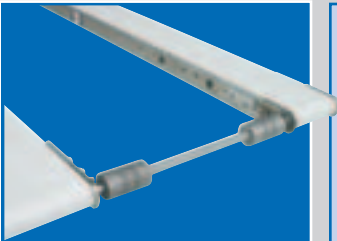
115/230 V AC, 1 phase, 50/60 hz input, 3 phase out, 1 hp max output
 10:1 speed range (when used with ID motor)
 UL/ULc
 NEMA 4X Enclosure
 Speed adjustment potentiometer
 Run/Stop switch
 Carrier frequency selectable for quiet operation

To Order:

Part Number: 125-0054-37 NEMA 4X AC Control

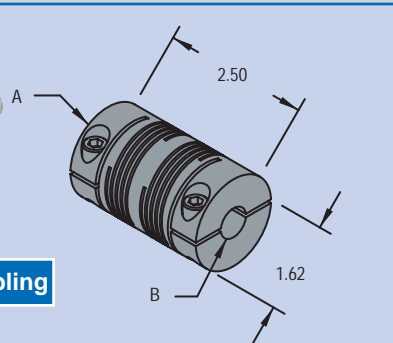
This 4X washdown controller can be used in a wet or dusty environment.

Drive Shaft Extensions and Couplings



Single Piece Flex Coupling

125R-0009-03 couplings pictured



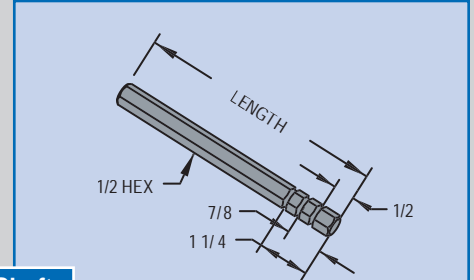
Part Number	A	B	**Torque Rating (Inch Lbs.)
125R-0009-02	.5 in. dia.	.5 in. dia.	78
125R-0009-03	.5 in. dia.	.5 hex	78
125R-0009-08*	.5 in. dia.	.472 dia.	78

*For use with corrosion resistant standard duty drives only
 **Value based on non-reversing applications with an angular offset of up to 5°.



Drive Extension Shafts

The Drive Extension Shaft can be used to gang drive multiple conveyors and/or for power take-off of remote drives.



Length	Part No.
23 in.	125R-0005-23
35 in.	125R-0005-35
47 in.	125R-0005-47
59 in.	125R-0005-59
71 in.	125R-0005-71
83 in.	125R-0005-83
95 in.	125R-0005-95

Automation Accessories

90° Transfer Plate



Conveyor Width	Part No.
2 in.	125R-0230-02
3 in.	125R-0230-03
4 in.	125R-0230-04
6 in.	125R-0230-06
8 in.	125R-0230-08
10 in.	125R-0230-10
12 in.	125R-0230-12
18 in.	125R-0230-18
24 in.	125R-0230-24

Note 1: Transfer plates are not intended for use with high friction or cleated belts.

Note 2: Discharge conveyor must be pushing.

Note 3: Customer to drill screw holes to mount plate.

Inline Transfer Plate



Conveyor Width	Part No.
2 in.	125-0220-02
3 in.	125-0220-03
4 in.	125-0220-04
6 in.	125-0220-06
8 in.	125-0220-08
10 in.	125-0220-10
12 in.	125-0220-12
18 in.	125-0220-18
24 in.	125-0220-24

Note: Transfer plates are not intended for use with high friction or cleated belts.

Pivot Mount Set



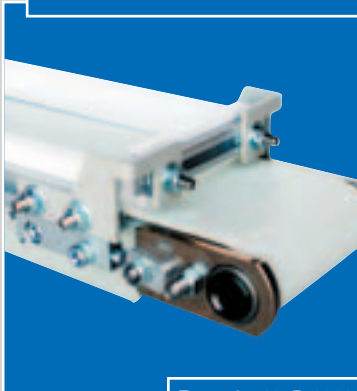
Note:

The pivot mount attaches to the tail end of the conveyor and enables a pivot point from which other devices can lift the conveyor.

Includes left and right hand mount

To Order:
Part No. 125R-0172-00

Adjustable Stops



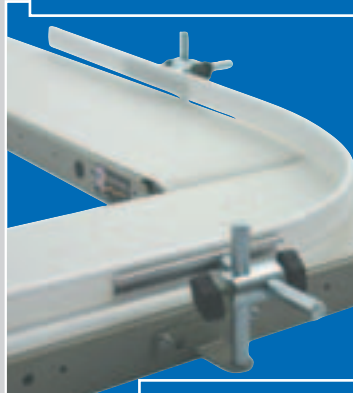
To Order:

1. Select an adjustable stop for 1" sides, 2" sides, or single tee slot (See pages 54 & 56)
2. Using the chart below, fill in the part number using the nominal width of the conveyor for the last two digits of the part number

	Part No.
1" Sides	125R-0232-WW
2" Sides	125R-0234-WW
Single Tee Slot	125R-0233-WW

Example: 125R-0232-04
End Stop for a 4" wide conveyor that has 1" aluminum side rails with wear strip

Adjustable Diverters



Note:

The adjustable diverter comes with a 5' piece of UHMW rail and (2) mounting assemblies that the user can utilize to help orient the product around a 90° transfer.

To Order:
Part No. 125R-0250-000